

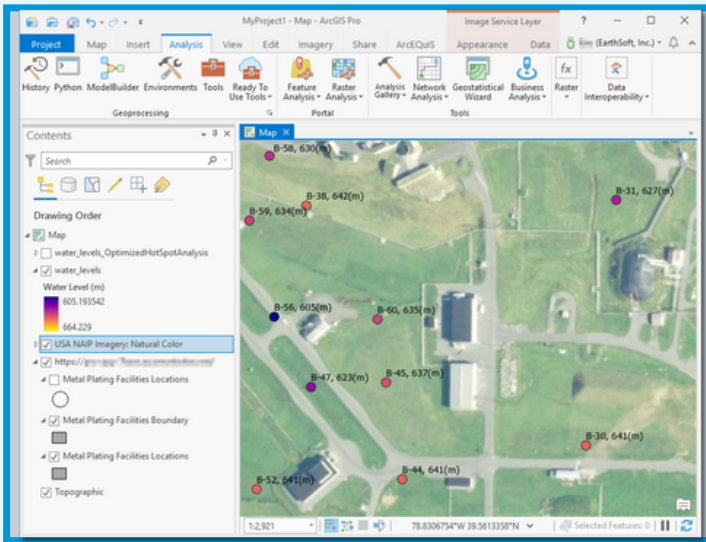


EQUSTM REST API

Unleash the Power of EQUS Data

EQUS is interoperable with other software with our REST API. An Application Programming Interface (API) allows two systems to communicate with one another. EarthSoft uses REST (Representational State Transfer) API to receive or send information from an EQUS Enterprise URL to perform specific tasks. The EQUS REST API includes an implementation of OData (Open Data Protocol) that allows users to interact directly with tables, columns, and records in the EQUS Schema.

Leverage the power of EQUS data transfer with our REST API license. EQUS users assigned the REST API role can also connect to an EQUS Enterprise site with Microsoft Power BI or ArcGIS Pro Desktop.



ArcEQUS

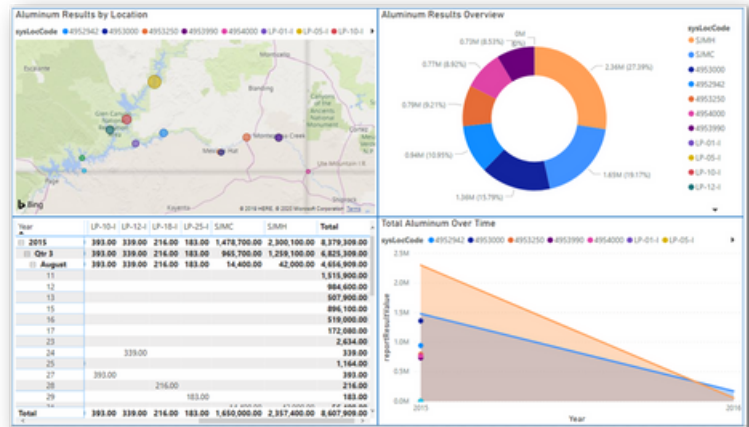
ArcEQUS is an add-in for Esri ArcGIS Pro Desktop to easily view and analyze EQUS data by directly connecting to an EQUS Enterprise site.

Map and analyze EQUS environmental and geotechnical data in real time with the power of ArcGIS Pro tools. ArcEQUS users do not need to have EQUS Professional installed to use the ArcEQUS add-in.



Power BI

Directly and easily access EQUS data quickly and securely. View analytics in advanced ways in real-time. Share EQUS information across organizations easily and efficiently with Power BI collaboration tools.





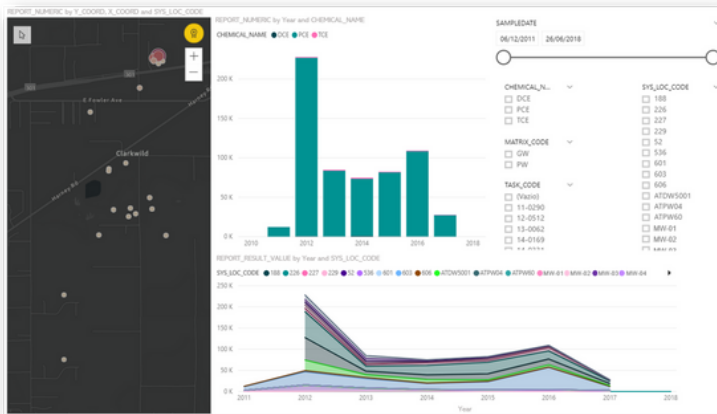
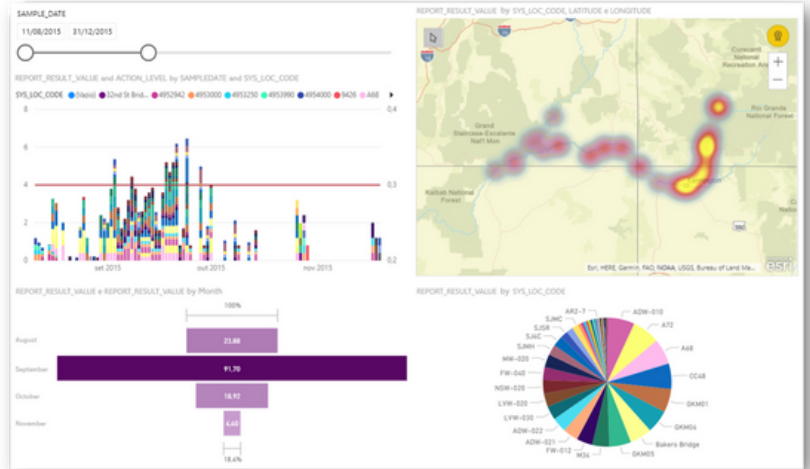
EQUS™ Data Connector for Power BI

Unleash the Power of EQUS Data

Directly and easily access EQUS data quickly and securely in Microsoft Power BI Desktop via the EQUS Enterprise REST API.

View analytics in advanced ways in real time. Share EQUS information across organizations easily and efficiently with Power BI collaboration tools.

Available via the REST API License.



Features

EQUS and Microsoft deliver a powerful, secure environmental data management platform.

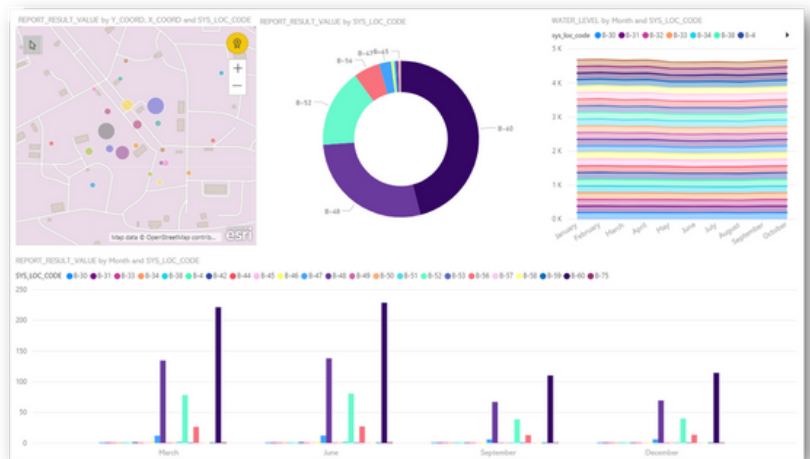
Supported EQUS data sources include:

- EQUS Facilities (must have user permissions)
- Locations for EQUS Facilities
- EQUS Reports

User Authentication

Users assigned the REST API role can access an EQUS Enterprise site in Power BI via their EQUS username and password, an API token, or Microsoft Entra ID account. API Tokens are generated in the User Profile Editor in EQUS Enterprise.

Microsoft
Partner



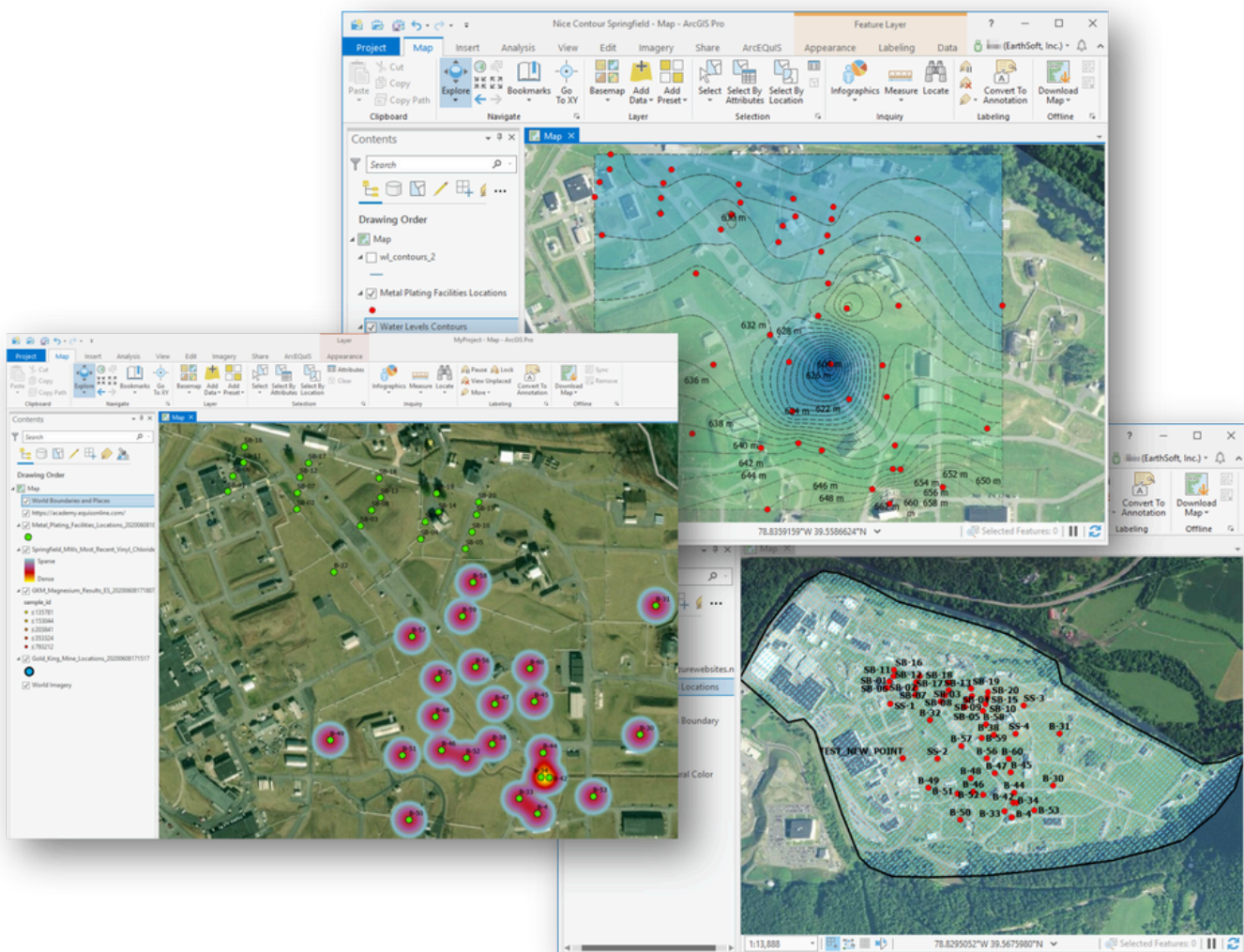


ArcEQuIS

Unleash the Power of EQuIS Data

Overview

ArcEQuIS is an add-in for Esri ArcGIS Pro Desktop to directly connect to EQuIS Enterprise and easily access EQuIS data. Map and analyze EQuIS environmental and geotechnical data in real time with the power of ArcGIS Pro tools. Available via the REST API License.



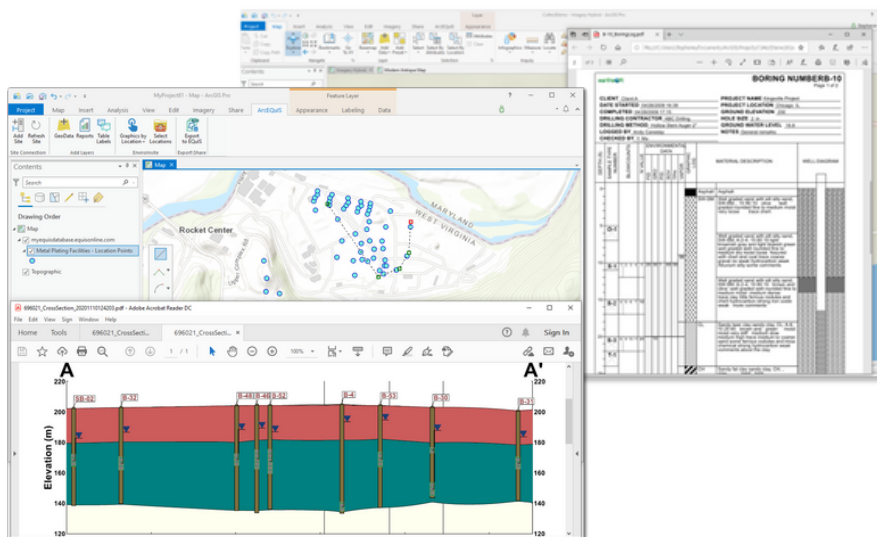
User Authentication

Users assigned the REST API role can access an EQuIS Enterprise site in ArcGIS Pro Desktop via their EQuIS username and password, an API token, sign in with Microsoft credentials, or Single Sign On (SSO) authentication provided the Esri-authenticated user is also an EQuIS user. API tokens are generated in the User Profile Editor in EQuIS Enterprise.



Features

- ✓ Add map layers as direct EQiS database links or snapshots from EQiS (i.e., a set of data at a given point in time). Supported layers include:
 - EQiS Facilities (must have user permissions).
 - Locations and Location Groups for EQiS Facilities. Locations can be either points or polygons.
 - Mappable EQiS Reports associated with the selected facilities.



- ✓ Click locations on a map layer to dynamically generate EQiS EnviroInsight (EI) graphics, such as boring logs, cross-sections, Piper diagrams, and Stiff diagrams. Graphics are automatically downloaded as PDF files.

- ✓ Create features like polygons, points, and polylines in ArcGIS Pro and save to the EQiS database as a GeoJSON file.
- ✓ Run EQiS reports directly in ArcGIS Pro and automatically add them to the map.
- ✓ Display tables of analytical data from an EQiS database on map layers in ArcGIS Pro. The data tables can be generated using either EQiS Table Label Reports.

