



# **EarthSoft Info**

**Southeast User Group**

**March 8, 2024**

**Mitch Beard**



# Topics

---

- 2023 Priorities
- 2024 Goals
- Governance and Gamification
- Australia Case Study
- Business Partner Program



# 2023 Priorities

- EQUIS Geotech
- Data Governance
- Australia Visit
- Compliance Journey

# 2023 Priorities – EQUS Geotech



## Modernize and automate geotechnical data management

Standardized and Centralized Data



Boring Logs and Subsurface Profiles



Built-in Standard Reports and Forms



Built-in Dashboards for Data Entry and Analysis



## EQUS Geotech Workflow



Project Planning



Field Activities & Data Collection



Boring Log Data Review



Lab Assignments & Testing

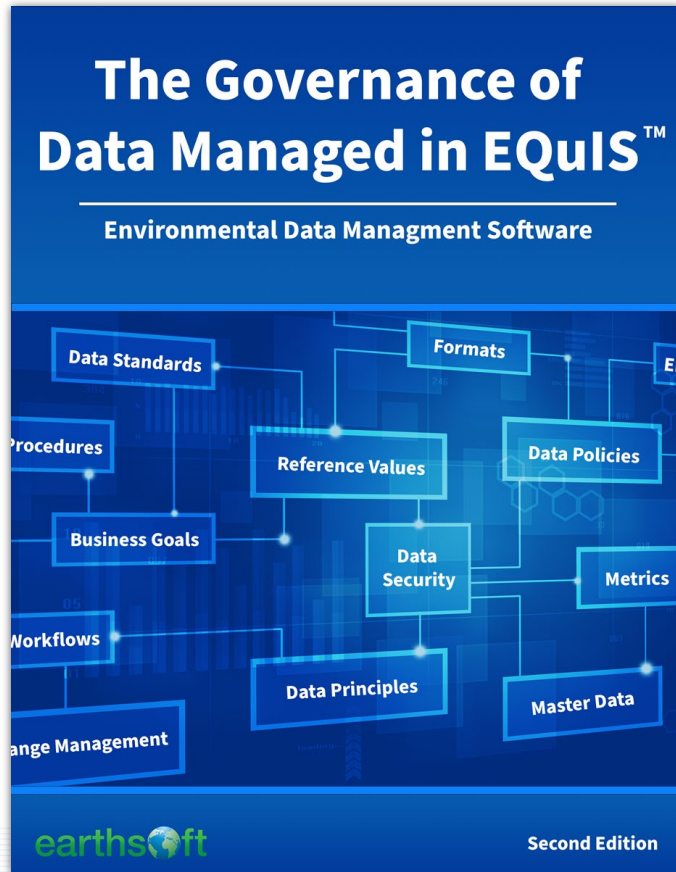


Instrument Data



Analyze Visualize & Report

# 2023 Priorities – Data Governance



## EQUIS™ Data Governance Checklist

EarthSoft works with organizations to establish EQUIS Data Governance programs based upon their business goals and drivers and data principles. This checklist provides an overview of data governance elements that are important for maximizing investments in their EQUIS data management system.

**Organizational Framework**

- Define roles and responsibilities relating to data governance and data management.
- Gather contact information for all stakeholders (e.g., organizational contacts, subject matter experts, laboratory contacts, field data collectors, data users, regulatory agency contacts, contractor contacts, and EarthSoft contacts).

**Create Data Policies**

- Data Acquisition** – Ensures data uploaded to EQUIS are fit for use. Defines use of EQUIS Collect or EDGE.
- Data Integrity** – Ensures data in motion between the EQUIS ecosystem and other systems are transferred in a secure way from known authenticated sources that can be audited.
- Data Security** – Addresses EQUIS Facility and User permissions, use of EQUIS REST API, and data exports. Determines who will host and provide IT support for EQUIS database.
- Data Quality** – Ensures high-quality data, which are accurate, complete, consistent, reasonable, timely, and valid. Describes use of EDP, SPM, and DQM.
- Data Use and Sharing** – Ensures data are not misused or abused, and are used ethically, according to any applicable law, and with due consideration for individual privacy.

**Data Management Workflow Review**

- Examine current data workflows and identify desired improvements. The workflows should maximize use of electronic exchanges of data between field and laboratory personnel (e.g., use of Collect Data Form, eQuote, eCOC, and eSRN). Includes:
  - Planning for data collection
  - Performing field data collection (manual and automated data logging)
  - Processing for laboratory data analysis and review
  - Assessing, reporting, and/or visualizing the collected data
- Identify responsible party or parties for performing each workflow step.
- Identify EQUIS application(s) for each workflow step.

Copyright 2022 EarthSoft, Inc.

Several clients have multiple consultants implementing EQUIS very differently.

## Data Governance and EDMS — The Short Story

### What is Data Governance?

Data Governance can be defined as the “exercise of authority and control (planning, monitoring, and enforcement) over the management of data assets.”

Data governance focuses more narrowly on the issues surrounding its access, protection, compliance, and usage of data with the goal of bringing maximum benefit to an organization.

- Who can access which segments of data (and how to minimize unnecessary access and risk)?
- Determine who will manage enterprise data and establish a system of accountability for those roles.
- Develop policies to maintain compliance with local, state, federal, and other regulations.
- Identify and implement tools that can be leveraged to make the most of the data.

The overall goal of data governance is to enable an organization to manage and protect data as an asset in a sustainable way. Data governance is not data management. Data governance functions to guide data management activities and ensure that data are properly managed.

### Why Perform Data Governance?

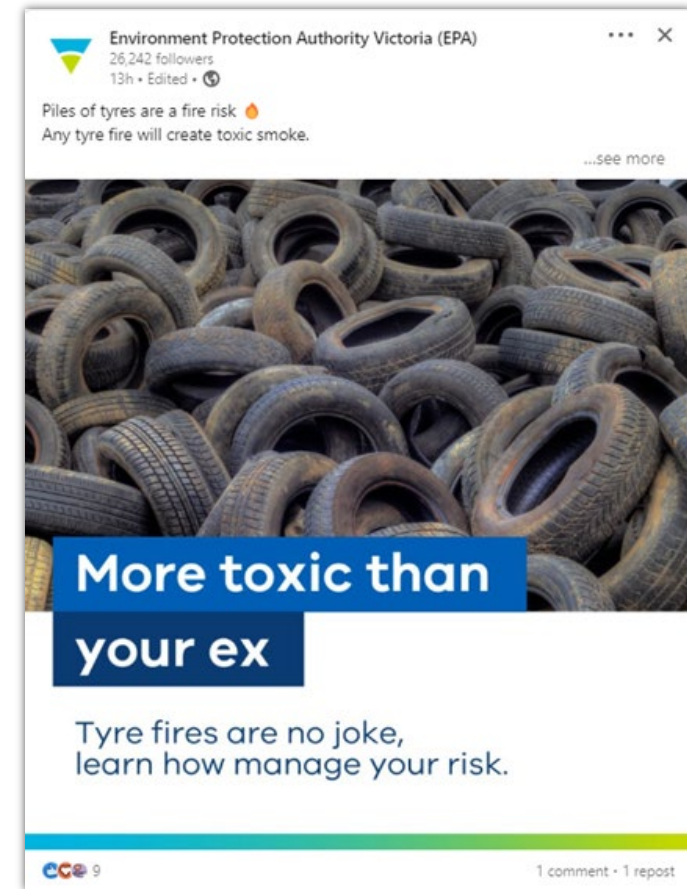
Businesses that have environmental compliance requirements frequently invest in an environmental data management system (EDMS). Common business drivers for organizations to invest in an EDMS and data governance are as follows:

- **Growth / Business Agility** – Arrive at decisions and recommendations faster with increased efficiency and accuracy.
- **Lower Cost / Operational Efficiency** – Achieve business goals by streamlined workflow and automation of data-related business processes.
- **Risk Management / Compliance and Security** – Ensure compliance to internal and external policies and regulations by defining data standards, policies, and processes with clear roles and responsibilities to control adherence.
- **Sustainability** – Operate in a sustainable manner by implementing a data governance program and EDMS.

Copyright 2021 EarthSoft, Inc.

# 2023 Priorities – Australia Visit

- Many New Clients
  - EPA Victoria
- Staff Growth and Changes
  - Manila Technical Support Team
- Project Management



# 2023 Priorities – Compliance

## EarthSoft is ISO 27001:2022 Certified!

ISO 27001:2022 is an information security standard published by the International Organization for Standardization (ISO), the world's largest developer of voluntary international standards, and the International Electrotechnical Commission (IEC).



 **A-LIGN** EarthSoft, Inc.  
Certificate Number: ISMS-EA-012524

**CERTIFICATE OF REGISTRATION**  
Information Security Management System  
ISO/IEC 27001:2022

**EarthSoft, Inc.**

A-LIGN Compliance and Security, Inc. certifies that the organization operates an Information Security Management System that conforms to the requirements of ISO/IEC 27001:2022. The scope and boundaries of the ISMS is as follows:

The Information Security Management System (ISMS) is applicable to the Information Security activities related to EarthSoft's EQuIS applications, platform, and software-as-a-service (which is an advanced environmental data management and decision support system).

ISMS-EA-012524	Original Certification Date	January 25, 2024
1.0	Expiry Date	January 25, 2027
Version 1.1 (November 3, 2023)	Issuance Date	January 25, 2024

400 N Ashley Drive  
Suite 1326  
Tampa, FL 32802  
888.702.5448  
info@a-lign.com  
A-LIGN.COM

Authorized by:  
  
Stephanie Oyler  
VP of Attestation Services

This certificate is the property of A-LIGN compliance and Security, Inc ("A-LIGN") and is bound by legally enforceable arrangements. This certificate relates to the organization's Information Security Management System and requirements of ISO/IEC 27001:2022 as defined by the scope and shall in no way imply that the organization's products, processes or services (in-scope or outside of the scope) are certified. The certification number, certification body mark and accreditation mark shall not be used on products or used in conjunction with documents relating to the organization's products, processes or services. A-LIGN shall take action to deal with incorrect or misleading use of the certificate, certification status or marks. This certification can be validated by contacting A-LIGN.

# 2023 Priorities

- Business Partner Program
  - Added Labs: ALS and Eurofins
- Teamed for R&D and Marketing
- The Business of Environmental Data Management
  - Data Quality is hard to “sell”.
  - Show something...



**earthsoft**  
Business Partner Program



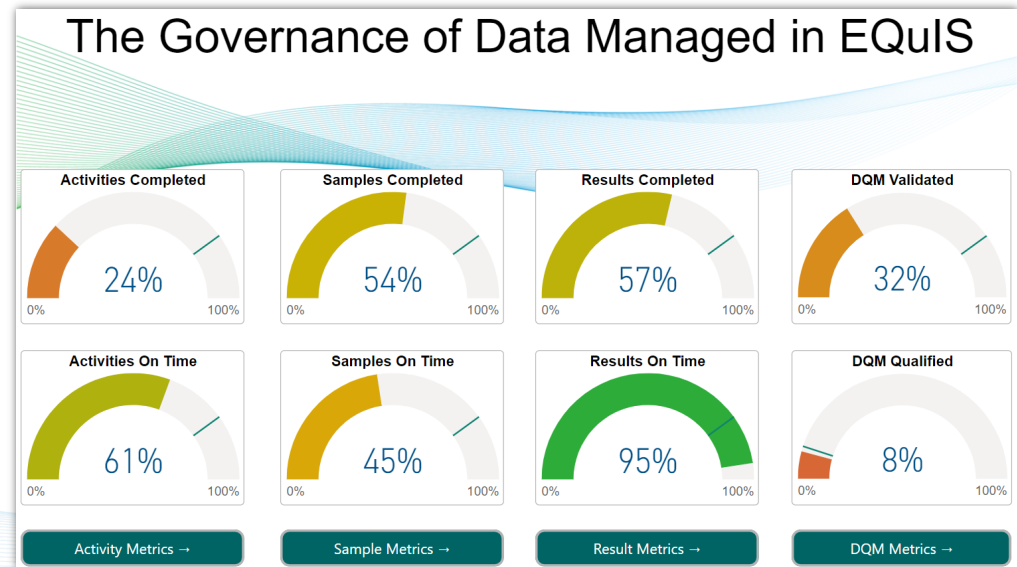
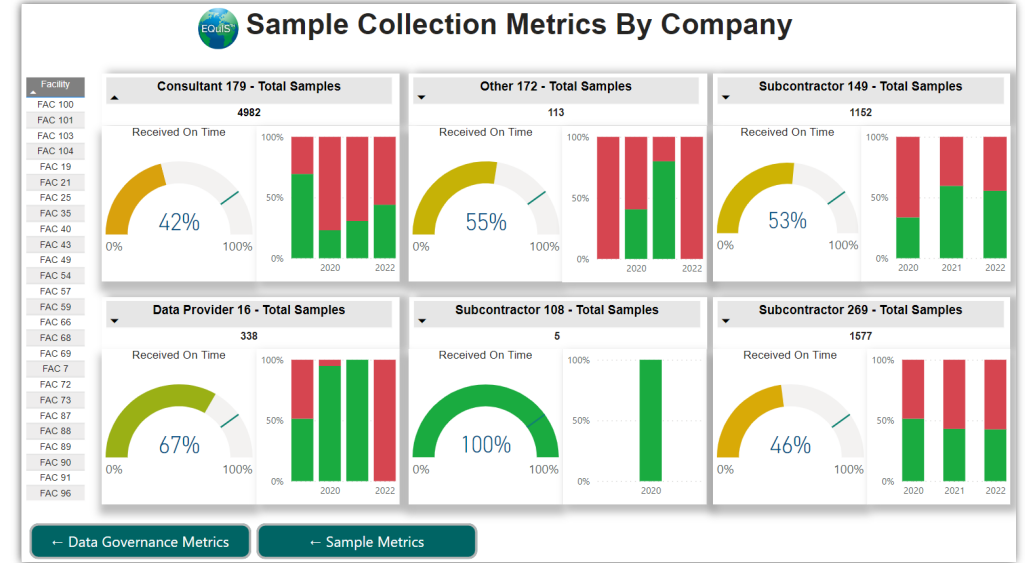
# 2024 Goals

Data Governance – Gamification

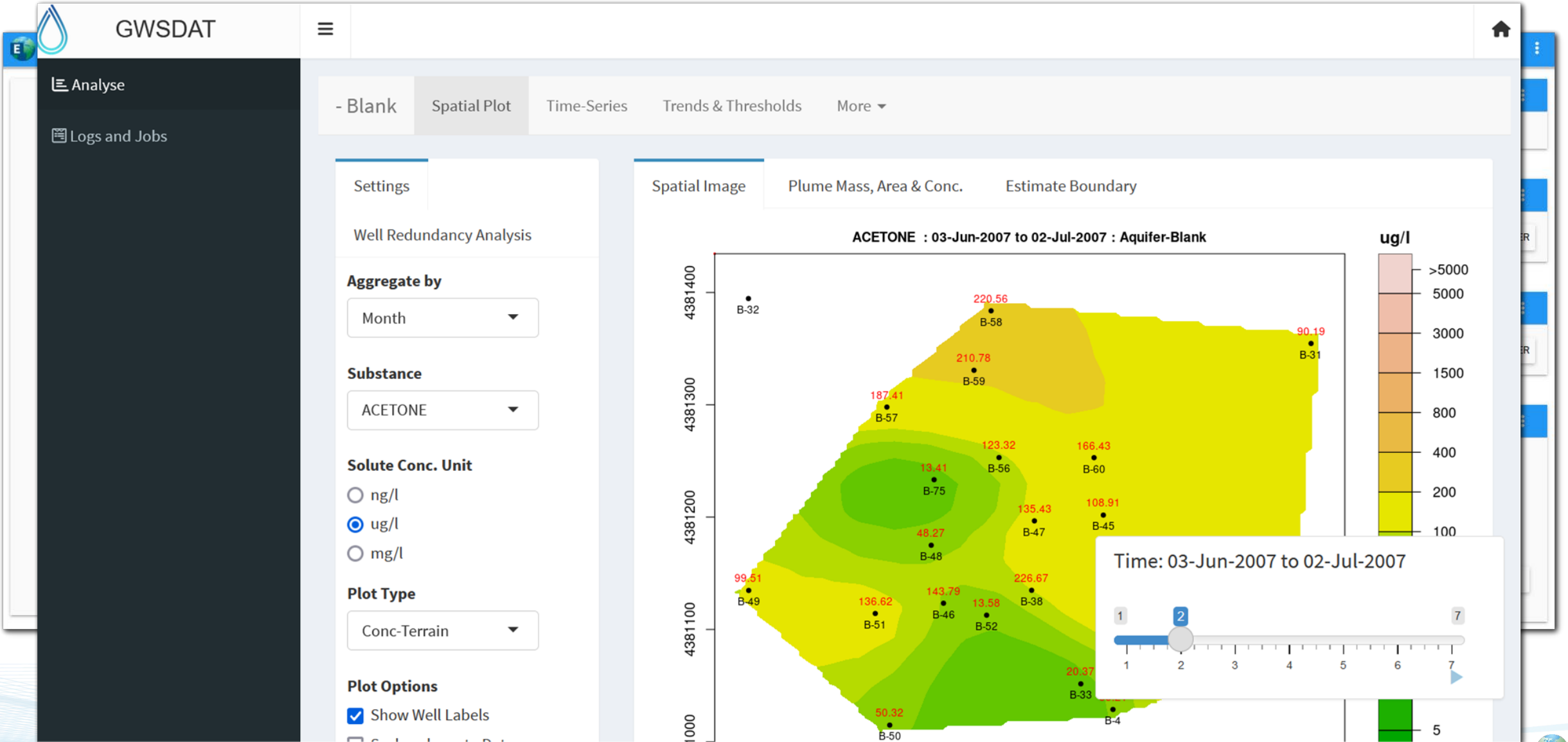
Software Acquisition from Major Oil

Collaborative R&D, Marketing with  
Consultant Business Partner

The Almighty Billable Hour is  
under assault



# 2024 Goals



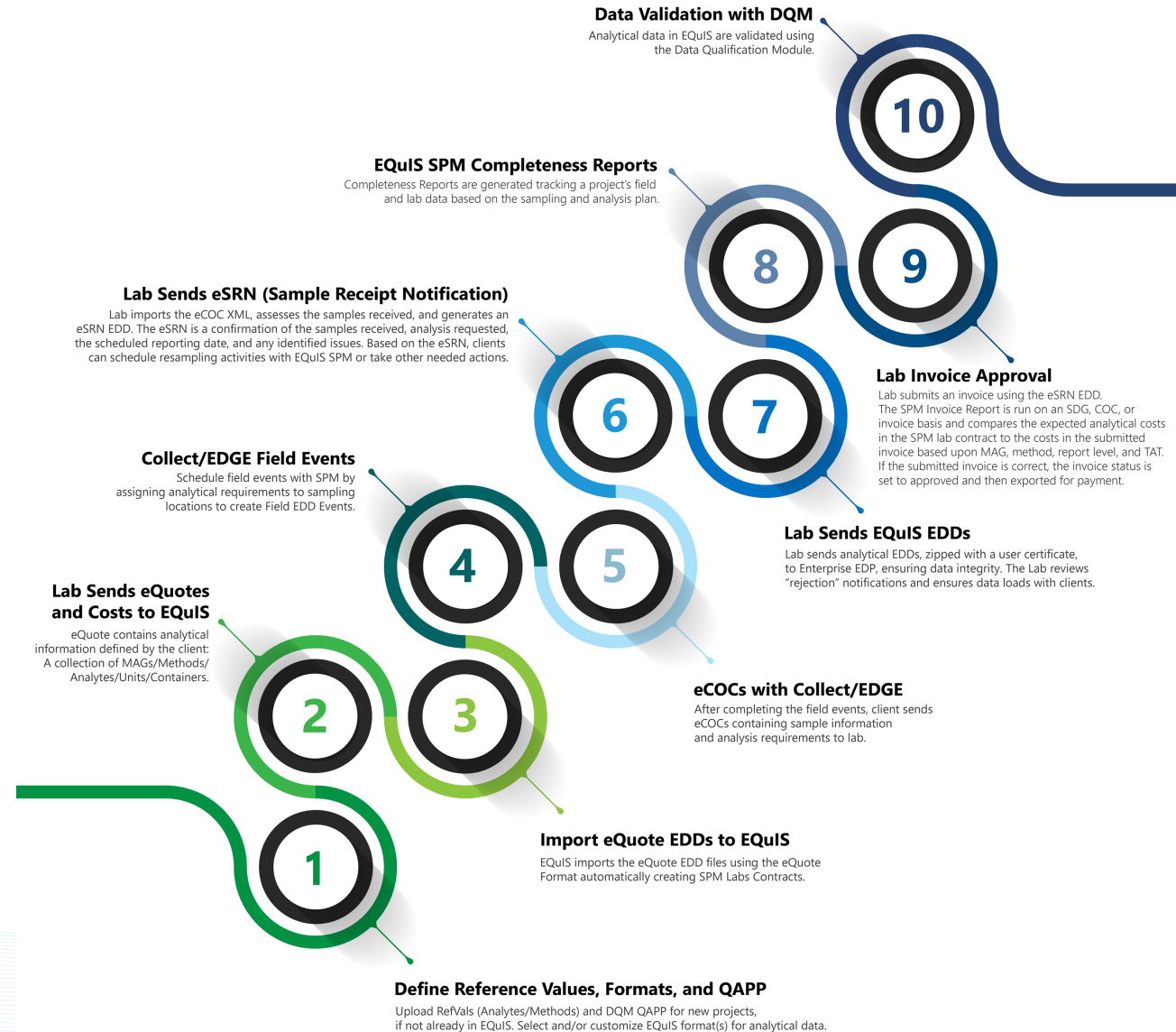
# 2024 Goals

- 1. Integration with Collaboration Tools:** Integrates with popular collaboration tools like Microsoft Teams, SharePoint, and Viva Engage. It also integrates with Azure Blob storage and other databases. This allows for seamless access and management of data and documents from these platforms.
- 2. Central Storage and Search Capability:** It acts as a central hub for storing and searching data and documents from multiple sources. This makes it easier to find and manage information within an organization.
- 3. Built on Microsoft Azure AI Stack:** Utilizing Microsoft Azure's AI capabilities, offers advanced search functionalities. This includes natural language processing and machine learning algorithms to enhance search results and efficiency.
- 4. Data Extraction and Document Summarization:** The portal provides tools for data extraction and summarization of documents. This can be particularly useful for quickly understanding the content and context of large documents without reading them in entirety.
- 5. Identification of PII and Profanity:** Can identify personal identifiable information (PII) and profanity within documents. This feature is crucial for maintaining privacy standards and ensuring a professional environment.
- 6. Unique Security Features:** The security aspect is addressed by ensuring that only authorized users can search and access documents specific to the repositories to which they have access. This is vital for maintaining data confidentiality and integrity.
- 7. Integration with EQUIS:** Is integrated with EQUIS for hosting lab reports, images, documents and Electronic Data Deliverables (EDDs) submitted by field and lab members.

In summary, offers a robust solution for knowledge management, combining AI-powered search and data handling capabilities with strong security and privacy features. Its integration with various data sources and collaboration tools makes it a versatile choice for organizations looking to centralize and streamline their information management practices.

# Australia Case Study

## EQulS Analytical Data Workflow



# Power and Ease of Use

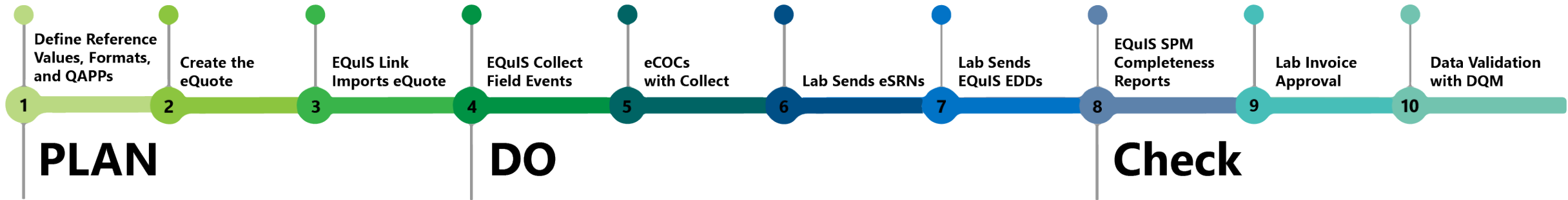
## Easier

- Fewer Choices
- Less Complexity
  - Canned Templates
- Less Flexibility

## Harder

- You can do anything.
- Many selection parameters
- Build New Templates
- Lots of Flexibility

# Australia Case Study



## Benefits

### Reported by bp include:

- Use of the workflow decreased time in the field from ~4 hours per trip to ~2 hours per trip.
- Fridays were previously consumed with extensive data transcription tasks, which have been eliminated.
- eCoCs submitted within minutes of each other from site locations that are an hour apart are immediately questioned for confirmation.
- Sampling location IDs are always correct (e.g., there is only one MW3, and it is never called MW03, MW-3, or anything else).
- Reference Values are all correct, with no errors.



### Efficiencies



### Quality

Many of the **lessons learned** from the digital workflow demonstration were related to training and change management issues. In response to the issues encountered, bp reports:

- New users can usually submit correct eCOCs after watching a series of eight 7-minute videos.
- Most users correctly submitted data the very first time after the training.
- About 70 project managers were trained and it was deemed easy to learn.
- EQiS helps track labs and field crews, and therefore, improve performance in real time.
- A new way to use the EQiS Sample Planning Module to generate ad hoc sampling plans on-the-fly was developed.



WHO

QUESTIONS

ANSWERS

WHERE

WHY

WHAT

WHEN

HOW