



EQulS™ Product Catalog

EQulS Enterprise and Schemas

EQulS Enterprise provides advanced workflow automation for efficient and reliable data loading, data quality checks, reporting, and graphics/visualization through web browsers. Enterprise improves decision support with user-defined dashboards comprised of multiple widgets for maximum customization, integration, and query-building tools. (Visit our [Dashboard Gallery](#)).

All EQulS workflows require EQulS Schemas in Microsoft SQL Server. The EQulS Schema is the licensed data structure, rules, and central data repository supporting all EQulS software products and workflow services. The Schemas can be hosted on your server or by EarthSoft in the cloud. EQulS Enterprise product levels (**Basic** and **Premium**) combine Enterprise automation and workflows with specific EQulS Schemas.



Basic Schema Level

- ◆ Standard EQulS Formats (EQEDD, EFWEDD, ESBasic, EZEDD, EZLithology, GeologyEDD, and more)
- ◆ Advanced Schema and tables, views, reports and formats to support client EDD formats
- ◆ EDDs and Formats: USEPA Regions 2, 3, 4, 5, 7, and 9; CA GeoTracker, LA, MN, MT, NY, TX, and other states; SEDD; NEDTS/NIRIS; ERPIMS; and more
- ◆ Vapor Intrusion Module (VI)
- ◆ EQulS Alive, Collect, DQM, and SPM (licensed separately)

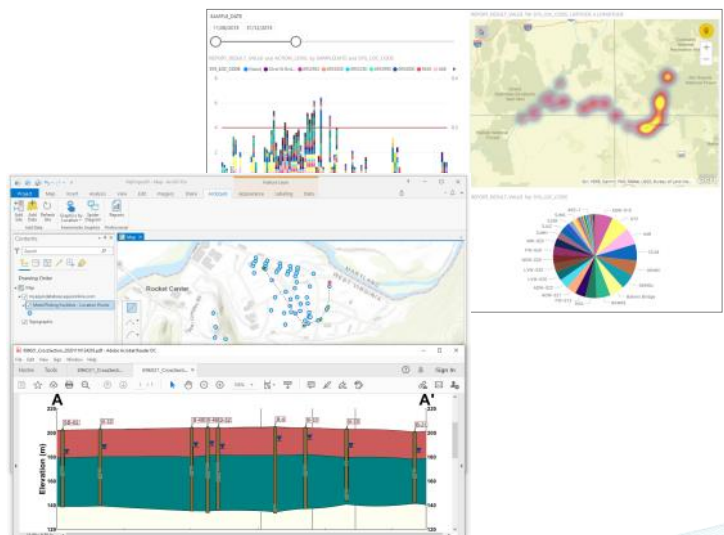
Premium Schema Level

- ◆ Schema extensions included in Enterprise Basic
- ◆ **EQulS Live** – Manages high-frequency, high-volume data from data loggers, sensors, weather stations, and other API sources. Data can be reported real time and/or reduced as desired.
- ◆ USEPA Water Quality Exchange (WQX) Module
- ◆ USEPA Air Quality System (AQS) Module
- ◆ EQulS Geotech (licensed separately)

EQulS REST API

Leverage the power of EQulS data transfer and interoperability with other software with our REST API license. Connect an EQulS Enterprise site with Microsoft Power BI or Esri ArcGIS Pro. Map and analyze EQulS environmental and geotechnical data in real time with the power of ArcGIS Pro tools. Share EQulS information across organizations easily and efficiently with Power BI collaboration tools.

The EQulS REST API also includes an implementation of OData (Open Data Protocol) that allows users to interact directly with tables, columns, and records in the EQulS Schema.



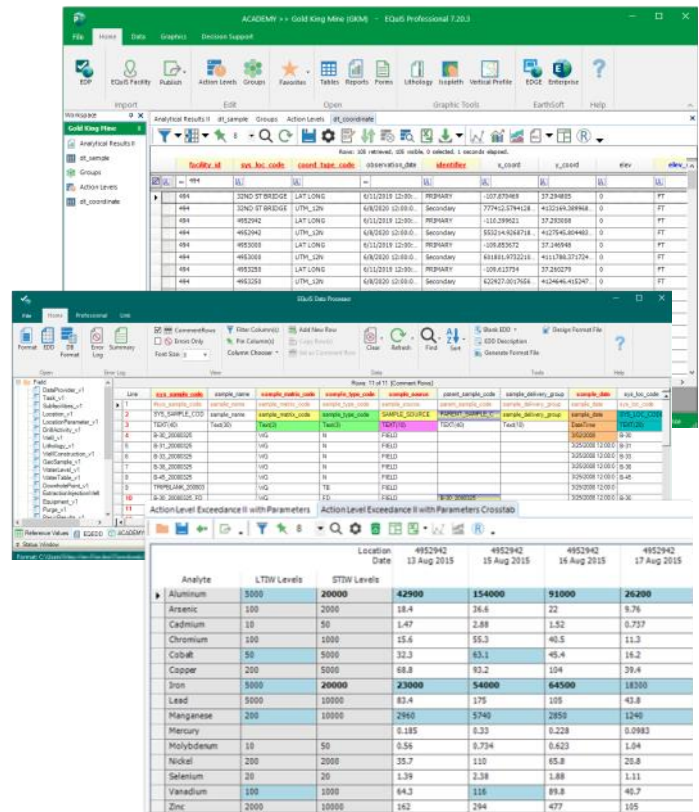
EQuIS Professional Libraries

EQuIS Professional is a powerful software user interface for checking, editing, loading, analyzing, reporting, and visualizing environmental and geotechnical data. Power users and administrators use Professional to manage EQuIS databases, reference values, action levels, groups, reports, graphs and graphics, and many data imports. Custom reports can be created and published in Professional to be available across other EQuIS applications.

EQuIS Professional is licensed in several library configurations that determine the available file formats, data analysis tools, other EQuIS components, and graphic applications and interfaces. The **Standard Library** features the EQuIS Data Processor (EDP) and 100s of reports and free EQuIS formats. EDP is a critical tool to automate the processing of environmental and geotechnical data. EDP checks electronic data deliverables (EDDs) for correctness and per client-specific rules.

Upgrade from Standard to add either data or graphic components or both (combined libraries). EQuIS Professional Libraries include: Standard, PlusD, PremierD, PlusG, PremierG, and the data and graphics combinations of PlusDG and PremierDG.

All Professional libraries require an EQuIS Enterprise license.

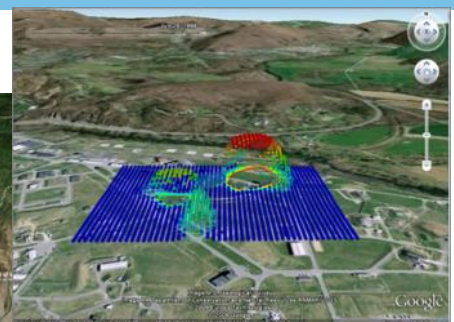
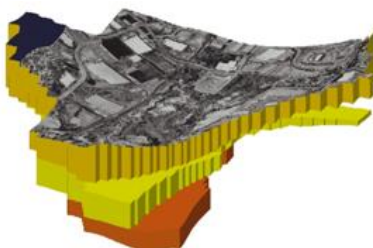


Plus Libraries

- ◆ Includes all Standard Library features
- ◆ **Data (PlusD and PlusDG)** – Formats: USEPA Regions 2, 3, 4, 5, 7, and 9; states of LA, MN, MT, NY, TX; CA GeoTracker; ERPIMS; AGS; SEDD; NEDTS/NIRIS; US Coast Guard; and others
- ◆ **Graphic (PlusG and PlusDG)** – Graphics and visualization interfaces for Google Earth, Surfer, LogPlot, RockWorks, EVS, GMS, Groundwater Vistas, gINT, CARStat, AquaChem, GWSDAT, FEFLOW, and others

Premium Libraries

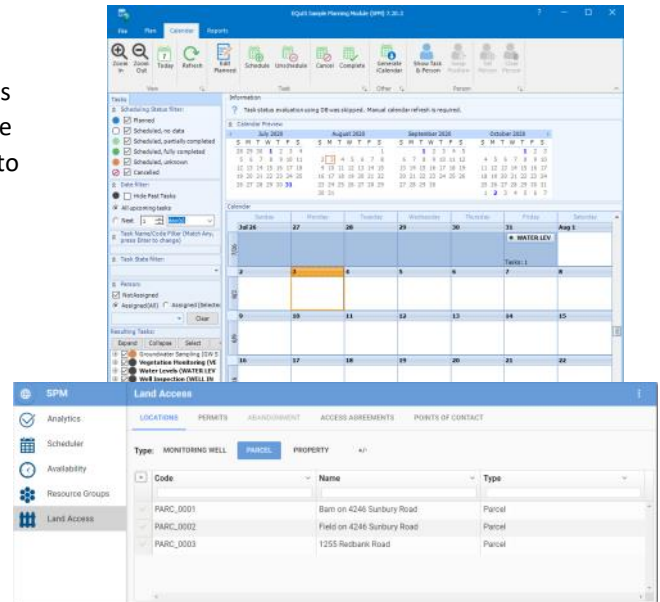
- ◆ Includes all Standard and Plus Library features
- ◆ **Data (PremierD and PremierDG)**– Includes EQuIS Sample Planning Module (SPM), EQuIS Data Qualification Module (DQM), and EQuIS Link
- ◆ **Graphic (PremierG and PremierDG)**– Includes EQuIS for ArcGIS and EQuIS for AutoCAD



Sample Planning Module

EQiS Sample Planning Module (SPM) improves data collection activities with planning, management, and tracking capabilities. SPM plans unique or repetitive events and tasks, compares planned events on a calendar to actual activities, and tracks completeness.

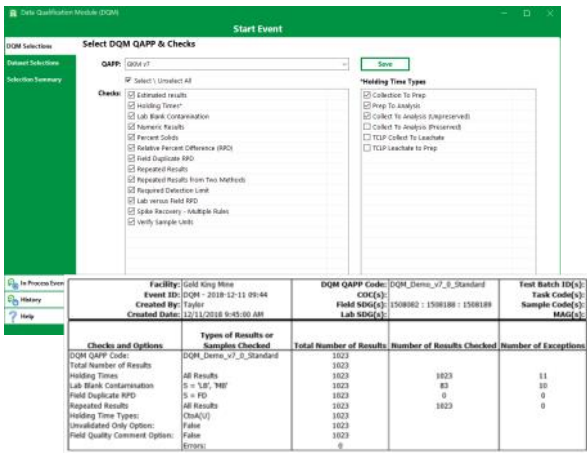
- ◆ Create detailed contracts for labs and field crews.
- ◆ View scheduled tasks across facility groups.
- ◆ Assign resources (people and equipment) to scheduled tasks.
- ◆ Plan for availability conflicts of samplers and equipment.
- ◆ View, create, or edit land access information.
- ◆ Produce Chains of Custody (COCs) and bottle labels.
- ◆ Sample Receipt Notification (SRN) module tracks testing related issues reported by labs.



Data Qualification Module

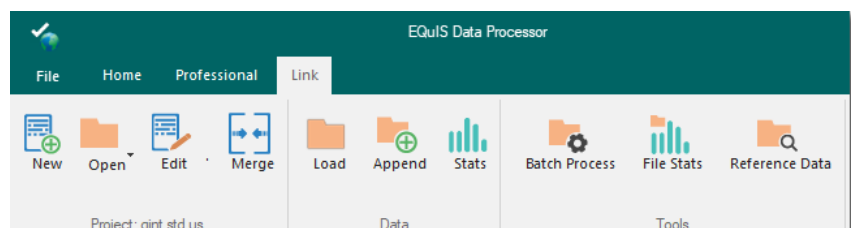
EQiS Data Qualification Module (DQM) is an automated data validation tool used to ensure sample data meet established data quality criteria.

- ◆ Allows data comparisons to both configured and/or calculated criteria.
- ◆ Project-specific rules, quality assurance / quality control limits, and data qualifiers.
- ◆ Add or modify data quality checks to meet client requirements.
- ◆ Checks include holding times, blank contamination, surrogate recoveries, precision, accuracy, reporting limits, and more.
- ◆ Use out-of-the-box reports or configure to facilitate reporting.



EQiS Link

EQiS Link is an advanced data transformation tool for migrating legacy or historical data into EQiS. Use EQiS Link with large data sets or with multiple files from a common source. EQiS Link can migrate data from a wide variety of input source files to standard EQiS EDDs. EQiS Link is available in Professional EDP. Check EDDs created with EQiS Link directly in EDP and enforce EDD formatting and valid values prior to importing EDDs into EQiS. Link Mapping project templates can also be used as a "virtual" format to upload EDDs to EQiS via the Enterprise EDP EDD Upload widget.

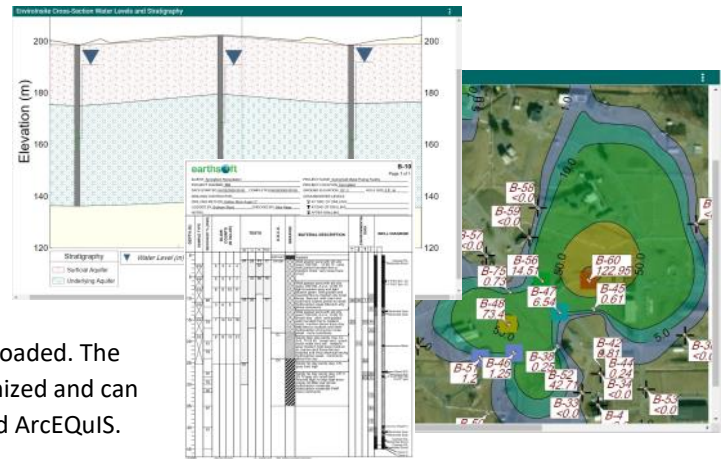


Decision Support Products

These add-on products can be acquired separately to enhance any of the EQUIS Professional product libraries.

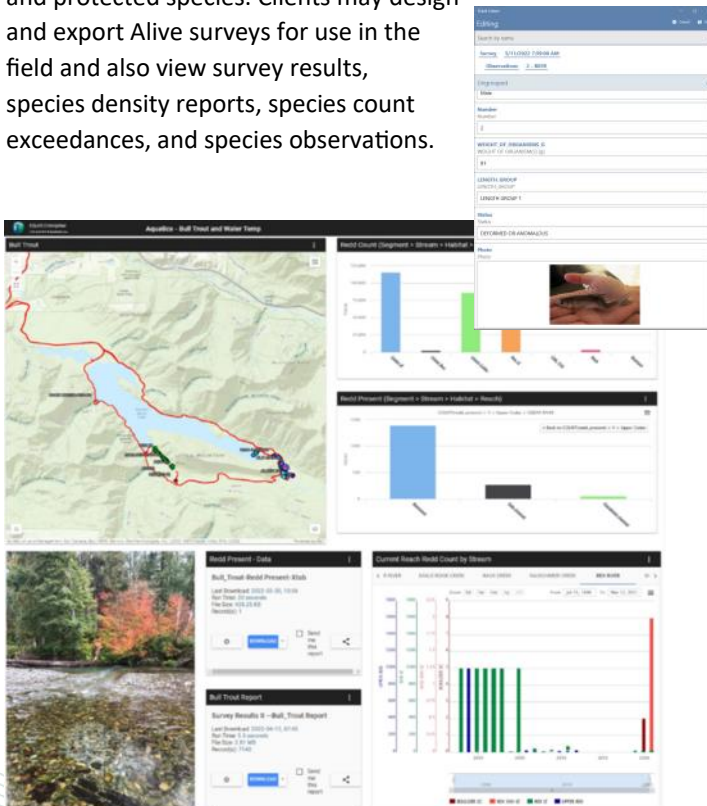
EFMD
EQULS **EnviroInsite**

EQulS EnviroInsite is software for the analysis and visualization of environmental and geotechnical data. EnviroInsite can create site maps, analyze stratigraphy (cross-sections and/or complex 2D or 3D geologic models), generate customized boring logs and strip logs, plot 2D and 3D images, analyze geochemistry data, and prepare customized report graphics that can be exported as PDF, CAD, or GIS files. Since EnviroInsite connects directly to EQulS, charts, tables, and maps are easily updated when new data are uploaded. The library of standard EnviroInsite boring log templates can be customized and can be used in other EQulS applications, such as Collect, Enterprise, and ArcEQulS.



EQulS Alive

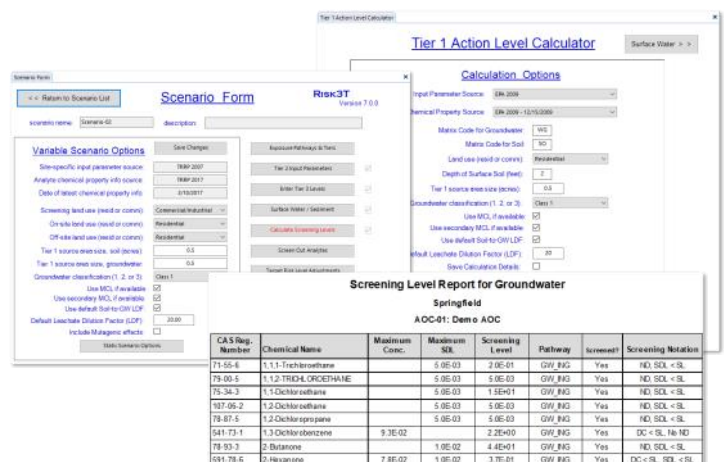
EQulS Alive manages survey, ecological, biological, and taxonomy data. Alive integrates with other EQulS applications for enhanced biological data analysis and assists with habitat assessment and inventory management of invasive, indigenous, and protected species. Clients may design and export Alive surveys for use in the field and also view survey results, species density reports, species count exceedances, and species observations.



Risk3T

Risk3T for EQUIS is a risk assessment toolkit that examines environmental risk and is used by industry, government, and consultants. Risk3T makes risk assessments quick, easy, and cost effective with the following modules:

- ◆ **Site-Specific Calculator** conducts Tier 2 or Tier 3 risk assessments to determine site-specific remedial goals or Action Levels protective of human health and the environment.
- ◆ **Tier 1 Action Level Calculator** is used by regulatory agencies, industry, and consultants to support the management of environmentally impacted sites.
- ◆ **Lookup Action Level Generator** significantly simplifies the process of determining which screening levels are applicable to a site for complicated regulatory programs.



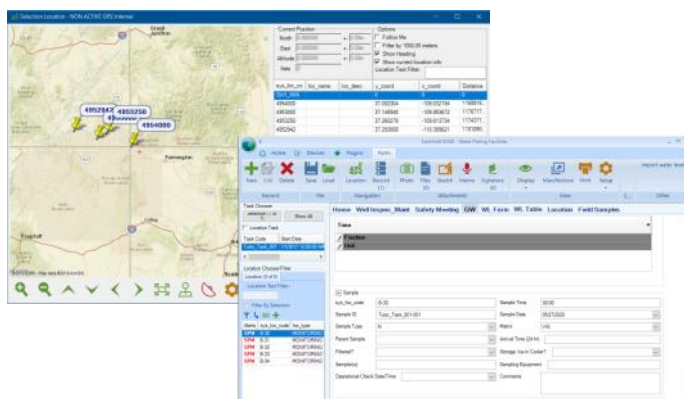
Data Acquisition Products

These products can be acquired separately to support EQuIS data collection and processing workflow.

EQuIS Collect

EQuIS Collect is a user friendly, mobile field application to collect environmental and geotechnical data on a smart phone, tablet, or computer. Collect uses EDP to verify and enforce data integrity in real time.

- ◆ Download is available for iOS, Android, and Windows devices.
- ◆ Connects to data loggers and public API data sources, and supports bar code scanners.
- ◆ Captures coordinates from GPS or maps.
- ◆ Captures images and allows annotation.
- ◆ Creates COCs and eCOCs.
- ◆ Works with SPM to pre-populate planned activities, sampling locations, and other data.
- ◆ Creates boring logs in the field.
- ◆ Synchronizes data between multiple field staff.



EQuIS Data Gathering Engine

EQuIS Data Gathering Engine (EDGE) is a comprehensive collection of integrated environmental field tools ensuring accurate and complete data collection using modern software and mobile computing technologies. EDGE contains an integrated GPS mapping interface, electronic COC generator, and a field EDP interface that enable users to generate, attach, and view image, voice and other common file formats. EDGE includes an EDD generator and much more.

EDP Standalone

EDP Standalone software offers interactive data screening and correction prior to EDD submission into an EQuIS workflow. EDDs that pass EDP Standalone checks are often submitted to EQuIS via Enterprise EDP.

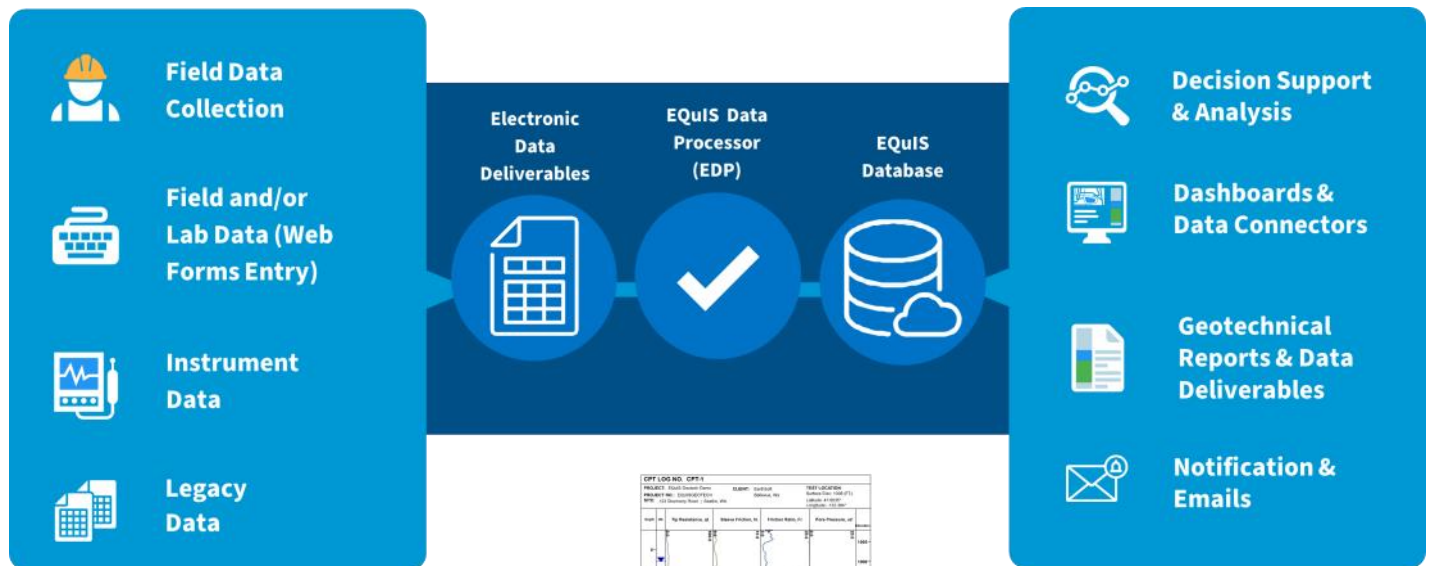
Distribution Licenses for EDP

EarthSoft clients can provide EDP Standalone licenses to data submitters for their use in large-scale EDD workflow operations.

EQuIS Geotech

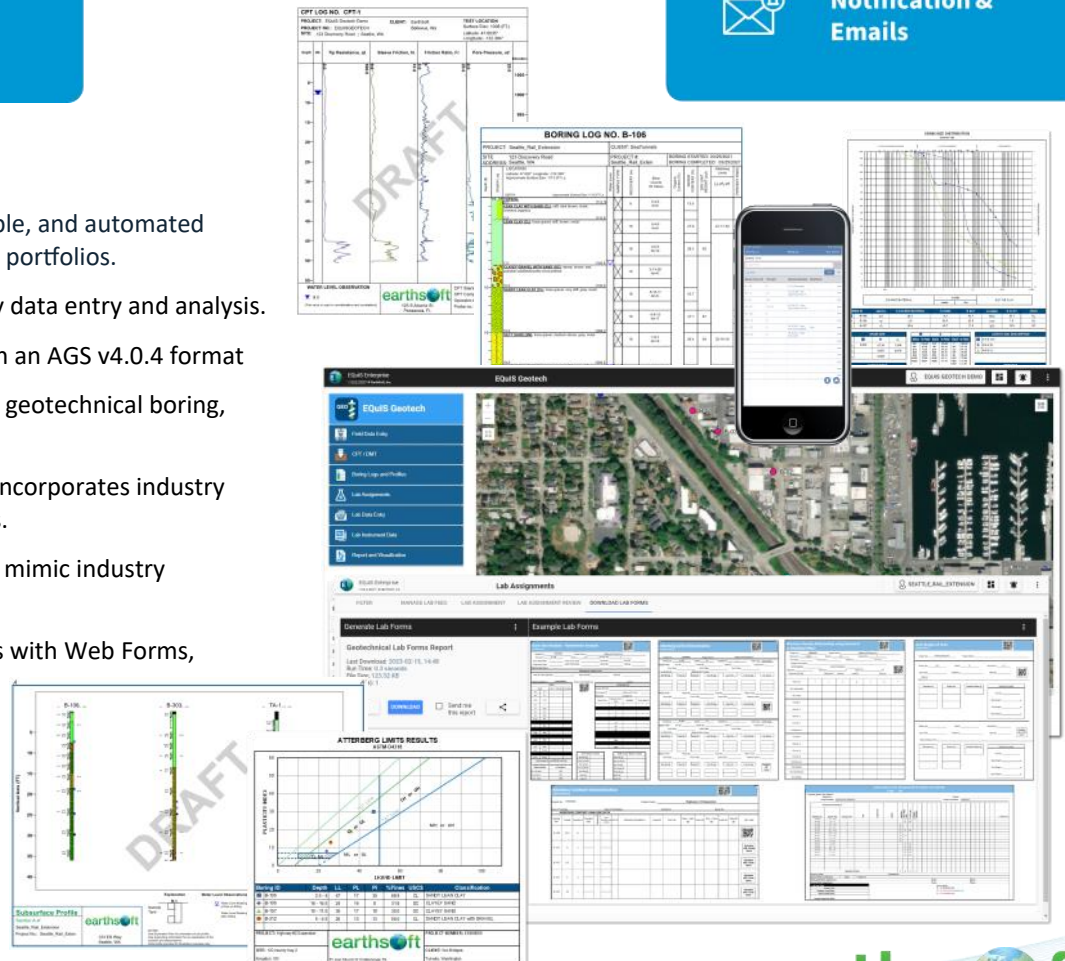
EQuIS Geotech extends the EQuIS software suite and manages geotechnical and environmental data in a single enterprise solution. EQuIS Geotech provides web forms for data entry, customizable reporting templates, and geotechnical-specific workflow components. Numerous native EQuIS data operations are integrated, including migration capabilities and visualization tools. EQuIS Geotech improves data quality and streamlines project workflows for large-scale geotechnical data management.

EQuIS Geotech is licensed separately and also requires licenses for Enterprise Premium, Professional PremierG (or DG), Collect, and EnviroInsight. The EQuIS REST API license is optional. Licensing includes a separate Schema, format files, numerous standard reports and templates, widgets, and configured dashboards.



Features

- ◆ Modular, scalable, repeatable, and automated workflows for multi-project portfolios.
- ◆ Built-in dashboards for easy data entry and analysis.
- ◆ Import/export EQuIS data in an AGS v4.0.4 format
- ◆ Produces industry standard geotechnical boring, CPT, and DMT logs.
- ◆ Supports raw lab data and incorporates industry standard ASTM calculations.
- ◆ Built-in reports designed to mimic industry standard formats.
- ◆ Direct data entry workflows with Web Forms, EQuIS Collect Forms, or EDDs.
- ◆ Open Systems Model – REST API supporting various third-party integrations.



Product and Order Information

To place an order or to learn about EQuIS products, contact Sales@earthsoft.com. Also visit our [website](#) and/or download specific product data sheets.

Alive – Manages survey, ecological, biological, and taxonomy data. Download the [Alive data sheet](#).

Air Quality System (AQS) Module – Collect, store, and manage AQS data in EQuIS and export the data into EPA-required file formats. Download the [AQS data sheet](#).

ArcEQuIS – Add-in for Esri ArcGIS Pro to easily view and analyze EQuIS data. Visit the [ArcEQuIS website page](#) or download the [ArcEQuIS data sheet](#).

Collect – User friendly, mobile field application to collect environmental and geotechnical data on a smart phone, tablet, or computer. Visit the [Collect website page](#) or download the [Collect data sheet](#).

Data Qualification Module (DQM) – Automated data validation tool used to ensure sample data meet established data quality criteria. Visit the [DQM website page](#) or download the [DQM data sheet](#).

Enterprise – Advanced workflow automation for efficient and reliable data loading, data quality checks, reporting, and graphics/visualization through web browsers. Visit the [Enterprise website page](#) or download the [Enterprise data sheet](#).

EQuIS Data Gathering Engine (EDGE) – Comprehensive environmental field data collection tools. Visit the [EDGE website page](#) or download the [EDGE data sheet](#).

EQuIS Data Processor (EDP) – Desktop or web user interface for checking and importing data into the EQuIS database. Visit the [EDP website page](#) or download the [EDP data sheet](#).

Envirolnsite – Software for the analysis and visualization of environmental and geotechnical data. Visit the [Envirolnsite website page](#) or download the [Envirolnsite data sheet](#).

Geotech – Extends the EQuIS software suite and manages geotechnical and environmental data in a single enterprise solution. Visit the [Geotech website page](#) or download the [Geotech data sheet](#).

Link – Advanced tool for migrating legacy or historical data into EQuIS. Download the [Link data sheet](#).

Live – Manages high-frequency, high-volume data from data loggers, sensors, weather stations, and other API sources. Visit the [Live website page](#) or download the [Live data sheet](#).

Power BI Data Connector – Allows users to access EQuIS facilities, locations, and user reports as data sources directly in Microsoft Power BI. Visit the [Power BI Data Connector website page](#) or download the [Power BI Data Connector data sheet](#).

Professional – Powerful software user interface for checking, editing, loading, analyzing, reporting, and visualizing environmental and geotechnical data. Visit the [Professional website page](#) or download the [Professional data sheet](#).

REST API – Allows EQuIS to be interoperable with other software. Visit [REST API website page](#) or download the [REST API data sheet](#).

Risk3T – Human health and environmental risk assessment toolkit. Download the [Risk3T data sheet](#).

Sample Planning Module (SPM) – Desktop and web user interfaces for planning, scheduling and tracking field sampling events. Download the [SPM data sheet](#).

Vapor Intrusion Module – Collect, store, manage, and report data associated with vapor intrusion assessment and monitoring. Download the [VI Module data sheet](#).

