



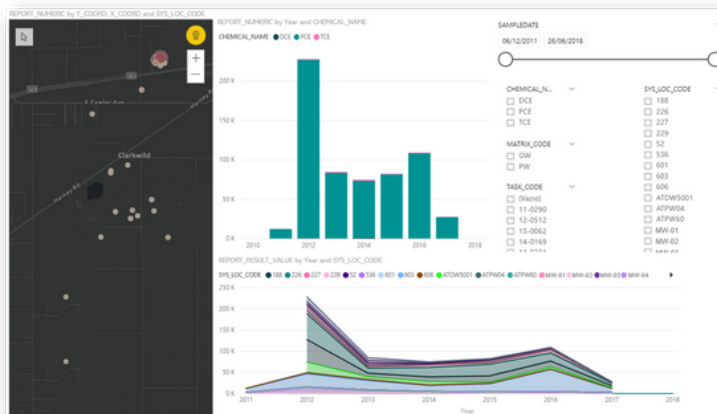
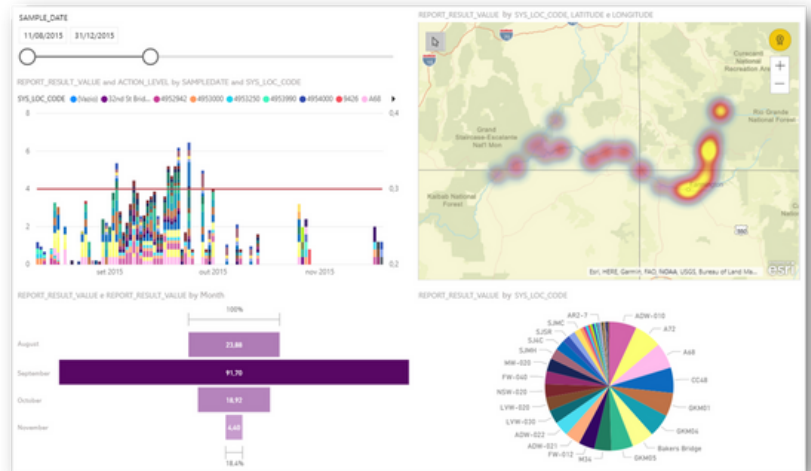
# EQUS™ Data Connector for Power BI

*Unleash the Power of EQUS Data*

Directly and easily access EQUS data quickly and securely in Microsoft Power BI Desktop via the EQUS Enterprise REST API.

View analytics in advanced ways in real time. Share EQUS information across organizations easily and efficiently with Power BI collaboration tools.

Available via the REST API License.



## Features

EQUS and Microsoft deliver a powerful, secure environmental data management platform.

Supported EQUS data sources include:

- EQUS Facilities (must have user permissions)
- Locations for EQUS Facilities
- EQUS Reports

## User Authentication

Users assigned the REST API role can access an EQUS Enterprise site in Power BI via their EQUS username and password, an API token, or Azure Active Directory account. API Tokens are generated in the User Profile Editor in EQUS Enterprise.

Microsoft  
Partner

