

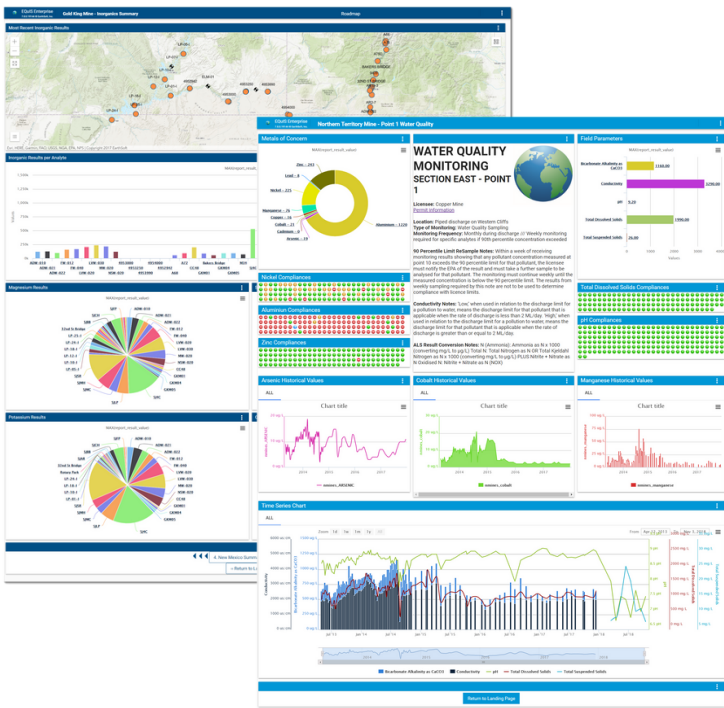


EQulSTM

The world's most widely used
environmental data management system

Own the Workflow, Make Better Decisions

EarthSoft is the recognized leader in providing environmental and geotechnical data management and decision support systems for industrial organizations, government agencies, consultancies, and laboratories worldwide. Our EQulS software supports the complete environmental data workflow. EQulS can handle environmental data associated with chemistry, biology, geology, geotechnical, hydrology, limnology, water, air, soil, sediment, noise, radiological, waste, and related compliance monitoring. EQulS is scalable and provides the ability to configure a system to deliver an automated workflow.



Why EQulS

- EQulS significantly improves environmental data quality while lowering the costs of data management including report production and GIS integration.
- Plan, manage, report, and visualize your environmental and geotechnical data needs.
- More than 25 years of continuous innovation.
- Considered by many to be the de facto industry standard.
- Used in 50+ countries – largest distributed environmental data management software solution.
- EQulS Online (secure cloud hosting with Microsoft Azure) and on-premises hosting.

Improve Lab and Field Data Quality

- Integrated data checker (EDP) to ensure quality environmental data workflows.
- Smart field forms on mobile devices enforce database and business rules automatically.
- EQulS Live handles real-time, time series data from data loggers, sensors, buoys, and other IoT sources.
- Data Qualification Module (DQM) verifies data quality rules for analytical data usability.

EQulS Support Resources

EarthSoft has expert training and support staff, routine webinars, an extensive video library, comprehensive online documentation, and a Community Center.

Business Partner Program

EarthSoft's Business Partner Program highlights strategic relationships with service organizations who have expertise with EQulS applications and process.

Benefits

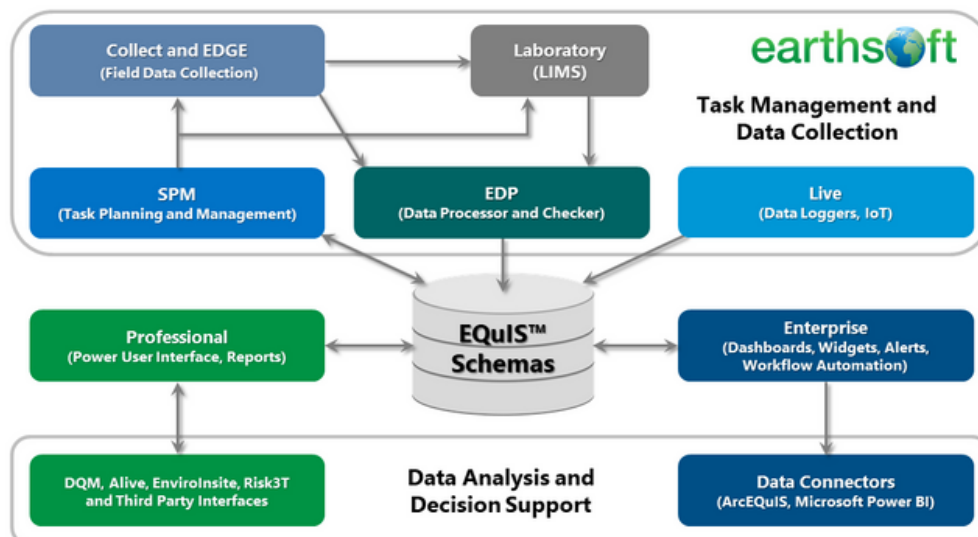
- ✓ **Accessibility.** Centralized location, collaborative work space, global access (web-based), historical retention
- ✓ **Standardization.** Consistency in format and presentation; data integrity
- ✓ **Security.** Data encrypted at rest and in motion; access controlled via user permissions
- ✓ **Collaboration.** Increase ability to share information through web portal and interoperability with other software via REST API
- ✓ **Cost Reduction.** Reduce man hours to input, create, and distribute information
- ✓ **Project Management Tools.** Ability to easily monitor project progress and data from a central location

The Complete Data Management Solution

Share data in the field, office and across the organization

Plan, input, analyze, and report to make powerful and informed decisions. Integrated applications support front-to-back environmental project workflows and provide solutions for a variety of project requirements:

- Project and task management
- Field data collection
- Analytical data processing, verification, and validation
- Analysis, reporting, and visualization (e.g., EnviroInsite, Esri ArcGIS, Microsoft Power BI)



Improve Data Quality and Lower Costs

"It is difficult to quantify the saving to CEMEX but it is estimated that between 25% and 30% of project time can be saved in compiling and manipulating data [in EQulS]."

Kevin Wilson,
Environmental Data Manager, CEMEX



Decision Support and Data Analysis

- Enterprise dashboards with data tables, graphs, maps.
- Add on products available to enhance EQulS Professional product libraries include Alive, EnviroInsite, and Risk3T.
- Integration with third party visualization and modeling software such as: Esri, Leapfrog, AutoCAD, gINT, EVS, Rockware, and many other common tools.



EarthSoft, Inc. | sales@earthsoft.com | www.earthsoft.com



Copyright 2023 EarthSoft, Inc.