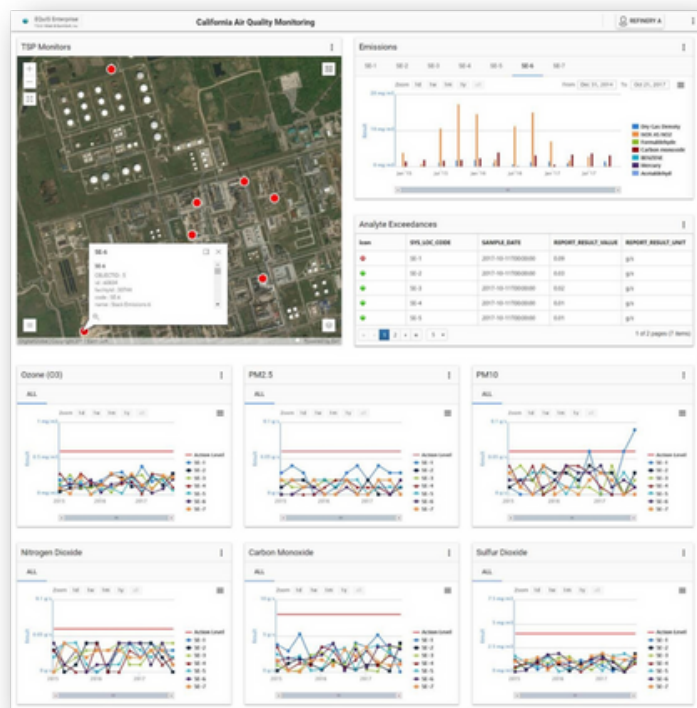




EQuIS™ Air Quality Data Management

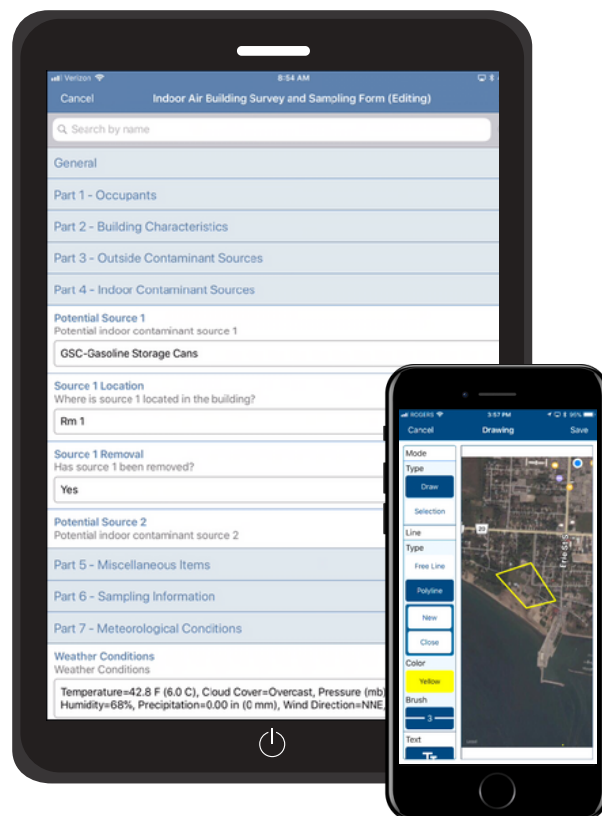
Overview

EQuIS is an advanced environmental data management and decision support system. EQuIS supports end-to-end air quality workflows from field planning and mobile field data collection to LIMS integration, validation, and reporting. Automated data processing helps you enforce data quality and integrity throughout the data lifecycle.



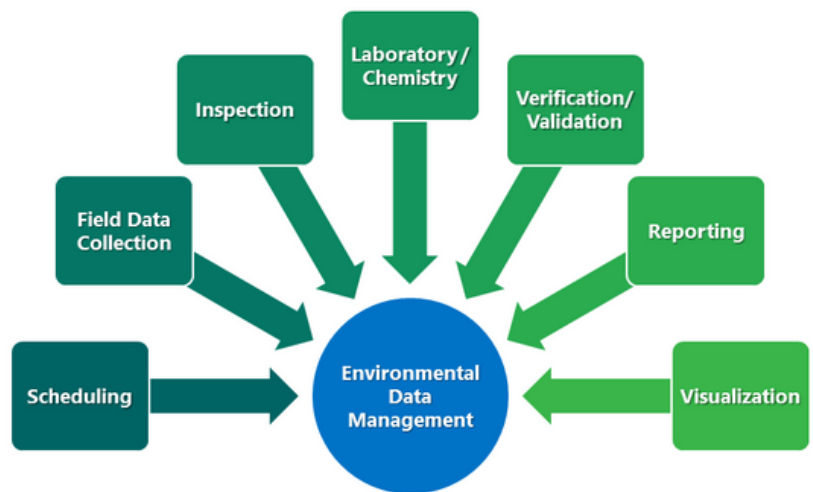
Field Planning and Data Collection

- Plan, schedule, and track field sampling and equipment maintenance activities
- Send electronic task lists and data collection forms to mobile devices
- Configure field data quality objectives for real time screening and calculations
- Collect equipment calibration, maintenance, sample data, and field notes
- Automatic sample ID generation, barcode scanning for filters, bottle labels, infield GIS
- Download instrument datafiles in the field and send them to your database



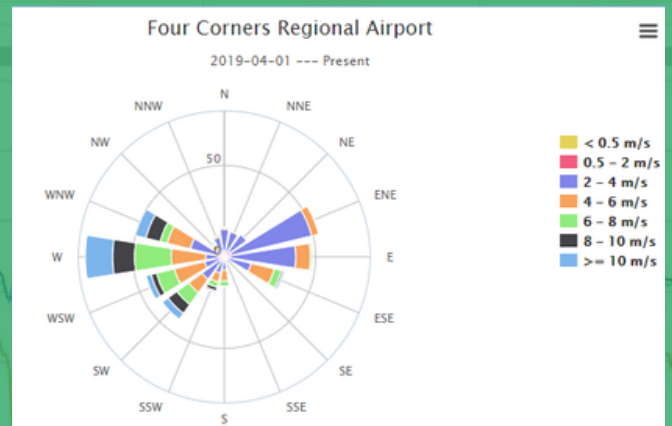
LIMS Integration

- Send filter requests, cannister requests, eCOCs, and eSRNs
- Build analytical data QAPPs for automated validation (State and AQS)
- Push field sampling data from mobile device to LIMS
- Push data from LIMS to EQulS for reporting and visualization



Real-Time Monitoring

- Connect to sensors, instruments, and data loggers
- Aggregate time-series data for easier reporting
- Monitor instrument status with intuitive dashboards
- Configure alarms, alerts, and notifications based on exceedance events



EPA AQS Reporting & Visualization

- Combine field and lab data for automated AQS transaction reporting
- Build dashboards to manage sampling and laboratory workflows
- Highly configurable web dashboards and project-specific widgets for flexible data visualization
- Generate data quality reports per site or across facilities

