

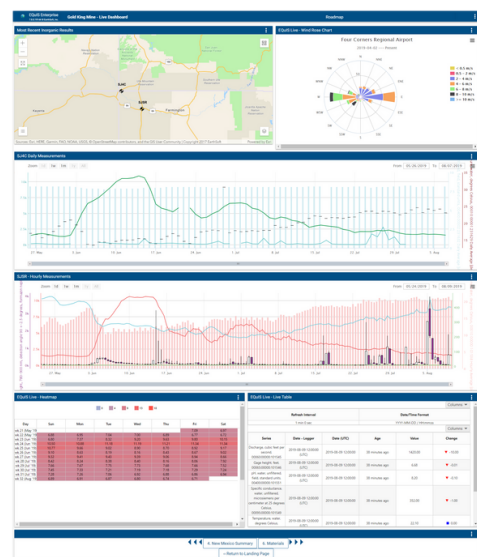


EQulS™ Online

EQulS Online Powered by Microsoft Azure

EQulS Online (EOL) is provided as software-as-a-service (SaaS) and is hosted by EarthSoft in the Microsoft Azure Commercial Cloud. EOL significantly reduces IT infrastructure management costs. Organizations have confidence in Microsoft Azure's reliability and take advantage of built-in security and data protection. EQulS Online scales resources more quickly, inexpensively, and responsively than on-premise systems.

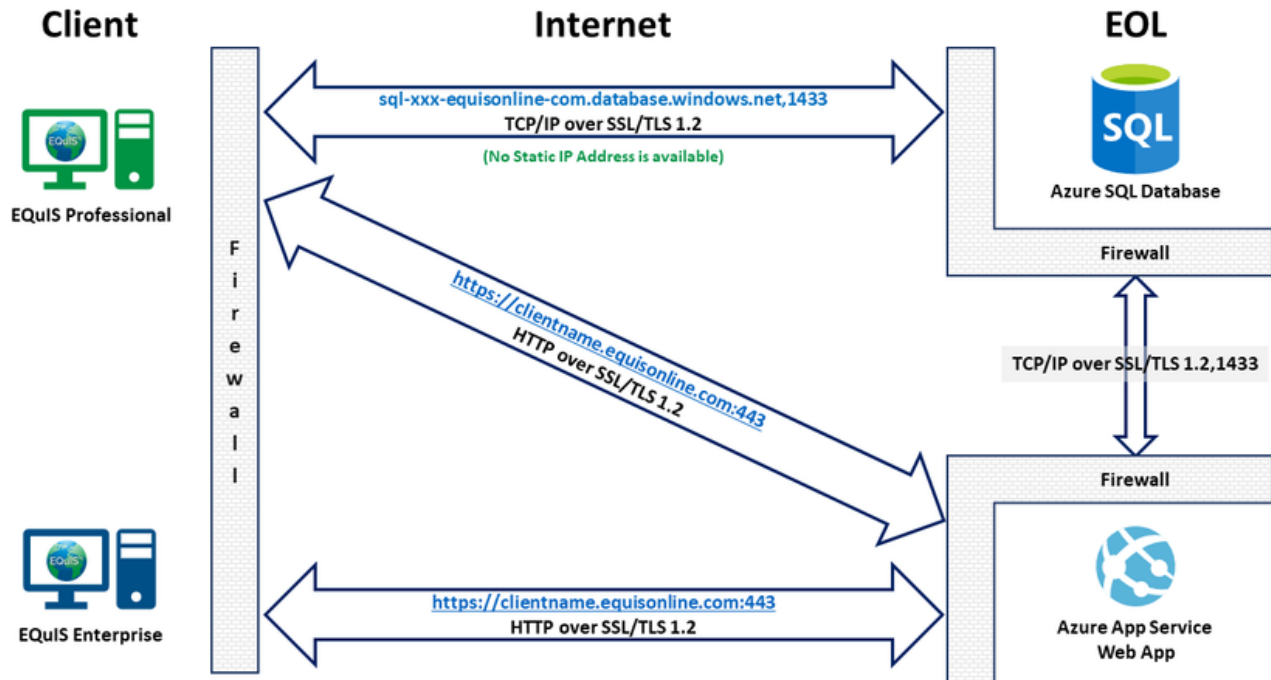
EQulS Online is scalable with customizable configurations to meet client needs. EarthSoft's experience with system configuration and interactive implementation is unsurpassed. EarthSoft provides, at client request, automatic updates to the latest release of EQulS.



EQulS Online Advantages

- ✓ **Reliability** – EOL hosted environments are powered by a global network of Microsoft-managed commercial datacenters that meet or exceed industry standards for availability and reliability. Other than routine maintenance or unexpected outages, the service will be available 365 days per year, 24 hours per day.
- ✓ **Compliance** – EOL is built with the reliability and compliance of Microsoft Azure. For a complete listing of Microsoft Azure compliance offerings, visit [here](#).
- ✓ **Security** – System level security comes with every EOL database. EOL infrastructure is always up-to-date with security patches, and state of the art security. See next page for details.
- ✓ **EarthSoft EQulS Support** – EOL hosting includes support services from experienced EarthSoft technical staff:
 - Streamlined troubleshooting – Our teams can diagnose and troubleshoot EQulS database and software related issues far more quickly and efficiently without private networking issues.
 - Continuous Azure site monitoring to proactively detect and resolve EQulS issues.
 - Applying newly purchased Licenses, Maintenance Keys, and Testing Licenses.
 - Manage EQulS Professional application-level-security (ALS) roles and permissions.
 - Configure EDD formats for automated data loading.

EQuls and Azure Security



Firewall Security

All database connections are secured via TLS-encryption and authenticated via appropriate credentials. Database firewall rules can be established to limit direct database connections to specific IP addresses or ranges.

Data Encryption

EarthSoft configures and manages EQuls databases with data encryption, allowing for secure transmission and storage of client data. A 2048-bit SSL certificate is used to encrypt EQuls data as it transmits between Azure and the end user (e.g., EQuls Enterprise and Professional connections).

Data Protection and Disaster Recovery

Database backups are essential for data protection and disaster recovery. The Azure database-as-a-service maintains ongoing, point-in-time EQuls backups that run automatically in the background. Database backups are securely stored in [paired datacenters](#) (which provide regional geographic redundancy). For an additional charge, EQuls Online clients may request a point-in-time database restore within a 14-day moving window.