

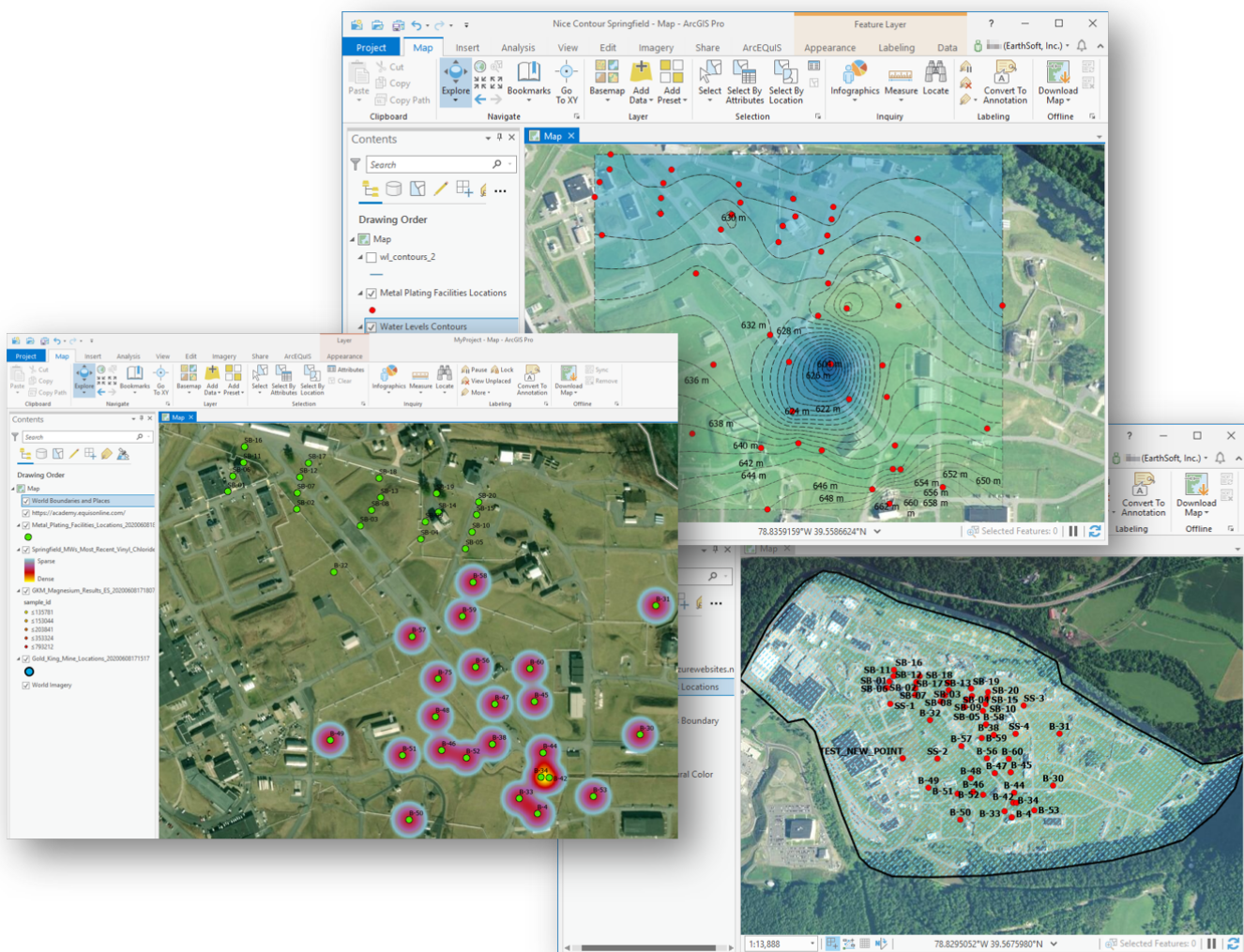


ArcEQuIS

Unleash the Power of EQuIS Data

Overview

ArcEQuIS is an add-in for Esri ArcGIS Pro Desktop to directly connect to EQuIS Enterprise and easily access EQuIS data. Map and analyze EQuIS environmental and geotechnical data in real time with the power of ArcGIS Pro tools. Available via the REST API License.

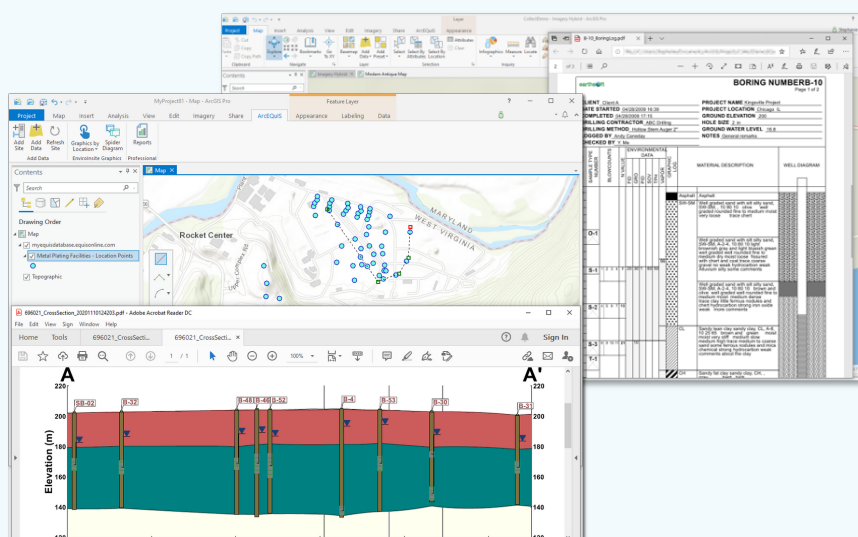


User Authentication

Users assigned the REST API role can access an EQuIS Enterprise site in ArcGIS Pro Desktop via their EQuIS username and password, an API token, or Single Sign On (SSO) authentication provided the Esri-authenticated user is also an EQuIS user. API Tokens are generated in the User Profile Editor in EQuIS Enterprise.

Features

- ✓ Add map layers as direct EQuIS database links or snapshots from EQuIS (i.e., a set of data at a given point in time). Supported layers include:
 - EQuIS Facilities (must have user permissions).
 - Locations and Location Groups for EQuIS Facilities. Locations can be either points or polygons.
 - Mappable EQuIS Reports associated with the selected facilities.



- ✓ Click locations on a map layer to dynamically generate EQuIS EnviroInsight (EI) graphics, such as boring logs, cross-sections, Piper diagrams, and Stiff diagrams. Graphics are automatically downloaded as PDF files. EnviroInsight license not required.

- ✓ Create point and polygon features in ArcGIS Pro that are saved to the EQuIS database.
- ✓ Run EQuIS reports directly in ArcGIS Pro and automatically add them to the map.

- ✓ Display tables of analytical data from an EQuIS database on map layers in ArcGIS Pro. The data tables can be generated using either EQuIS Crosstab Reports or EQuIS EnviroInsight. The EI data tables are added as a series of shapefiles. EnviroInsight license not required.

