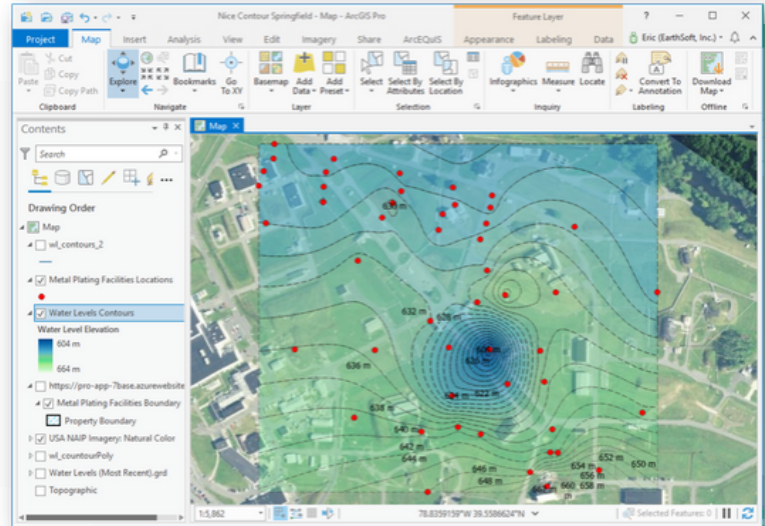


Unleash the Power of EQuIS Data

## Overview

ArcEQuIS is an add-in for Esri ArcGIS Pro Desktop to directly connect to EQuIS Enterprise and easily access EQuIS data. Map and analyze EQuIS environmental and geotechnical data in real time with the power of ArcGIS Pro tools.

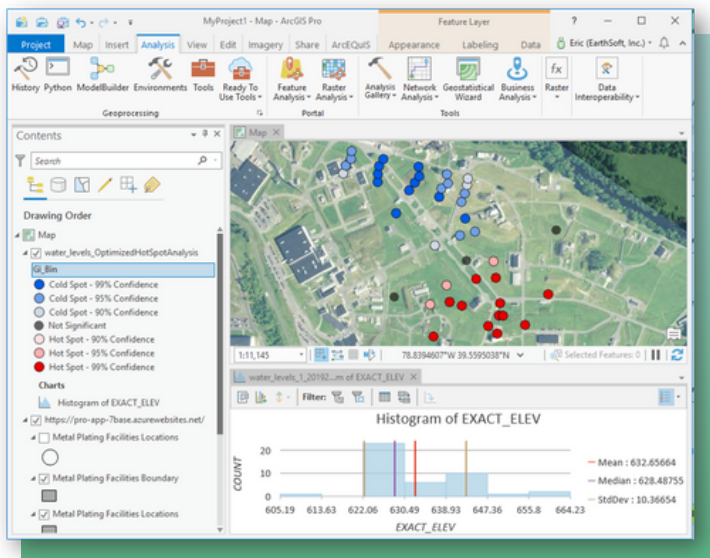


## Features

Add map layers as direct EQuIS database links or snapshots from EQuIS (i.e., a set of data at a given point in time). Supported layers include:

- EQuIS Facilities (must have user permissions).
- Locations and Location Groups for EQuIS Facilities. Locations can be either points or polygons.
- Mappable EQuIS Reports associated with the selected facilities.

ArcGIS Pro can be used to create point and polygon features that are saved to the EQuIS database.



## User Authentications

Users assigned the REST API role can access an EQuIS Enterprise site in ArcGIS Pro Desktop via their EQuIS username and password, an API token, or Single Sign On (SSO) authentication provided the Esri-authenticated user is also an EQuIS user. API Tokens are generated in the User Profile Editor in EQuIS Enterprise.

Available via the REST API License.