

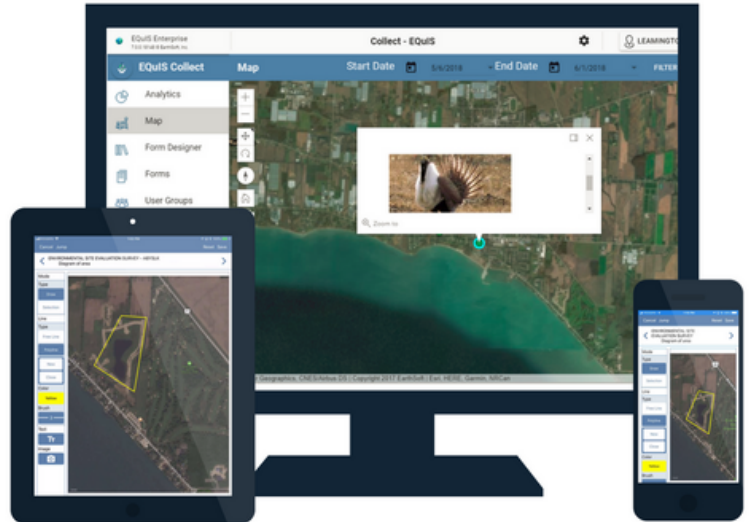


EQUS™ Collect

Field Data Collection

Simple. Efficient. Real time.

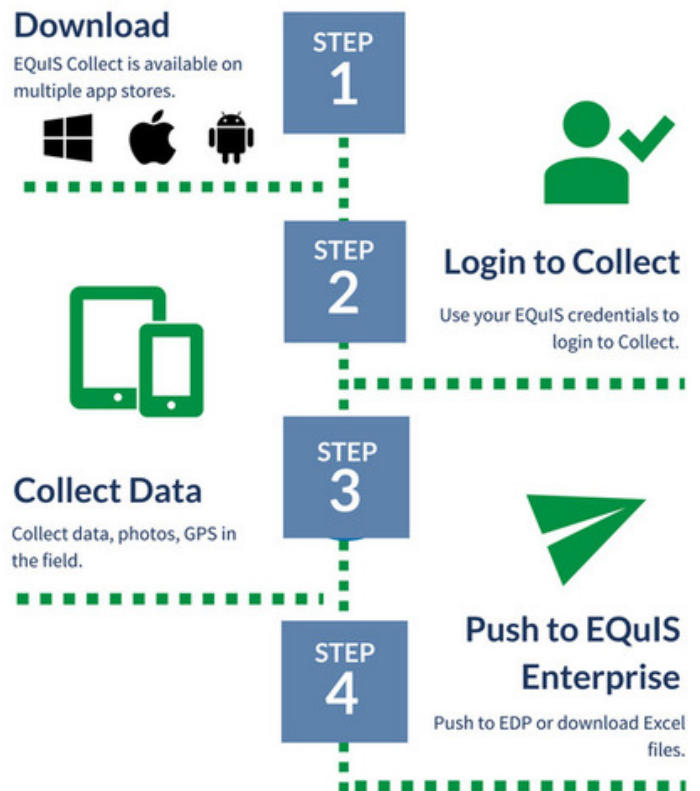
EQUS Collect is a mobile field application for collecting any type of data on your phone, tablet, or PC. Use EQUS Enterprise to build and publish field data collection forms. Collect, verify, and enforce data quality in real time.



FEATURES

- Works on smart phones, tablets, and PCs (iOS, Windows, Android)
- Subscription licensing
- Manage forms and users with dashboards
- Build forms with advanced logic
- Simplify data collection workflows
- Intuitive user interface
- Forms using any EQUS formats
- Collect non-EQUS data
- Support georeferenced data (map views)
- Manage structured or unstructured data
- View status of forms and data in real time

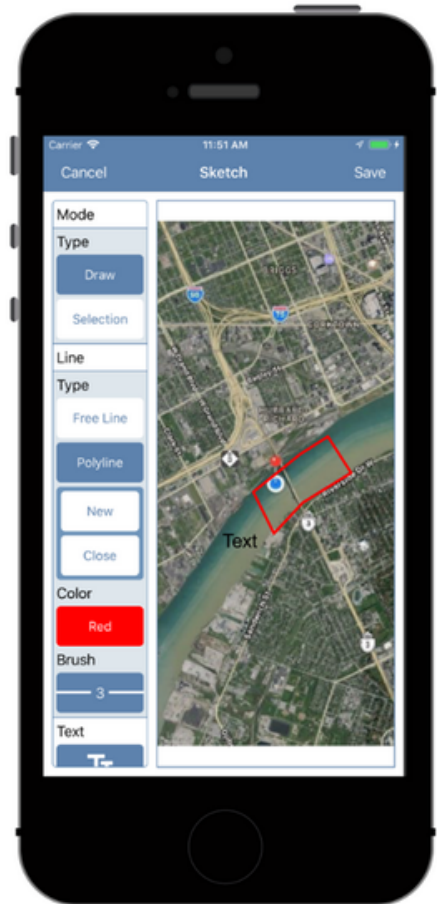
EQUS Collect Workflow



EQUS Collect Mobile

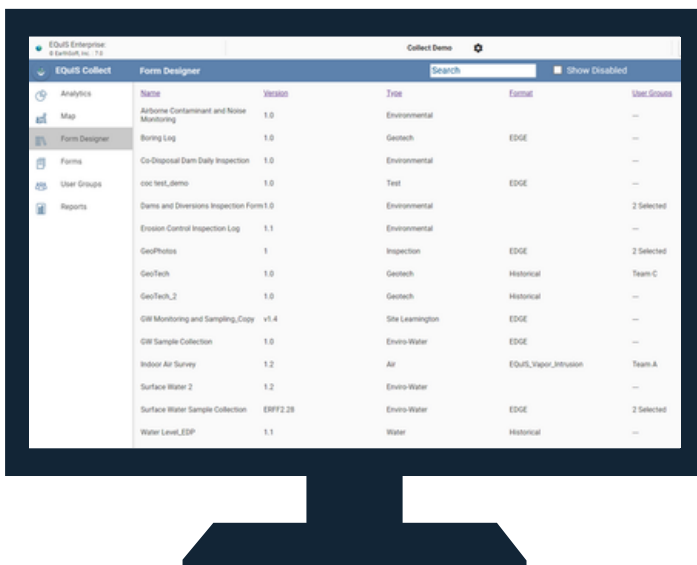
Field data collection

- Free download from the app stores (iOS, Android, Windows)
- Works on and offline
- Set form's permissions per field teams
- Receive field instructions along with forms
- Connect to public API data sources
- Capture coordinates from GPS or maps
- Support bar code scanning
- Capture single or multiple images
- Draw on images with Sketch Pad
- Built in EDP data checker
- Lock forms with signature
- Generate reports and view on the devices
- Upload data to EQUS Schemas
- Workflow status notifications
- Auto save; online and offline backup options



EQUS Collect Enterprise

Manage field data workflow via web browsers



Dashboards to manage users and forms, create and publish forms, monitor field data collection, and report analytics.

- Simple Form Builder with advanced logic
- Extensive forms template library
- Manage form assignments for field teams
- Monitor field data collection activities in real time
- View field data and forms on maps
- View and check data submissions
- Generate and view reports
- Key performance indicators (KPIs)

