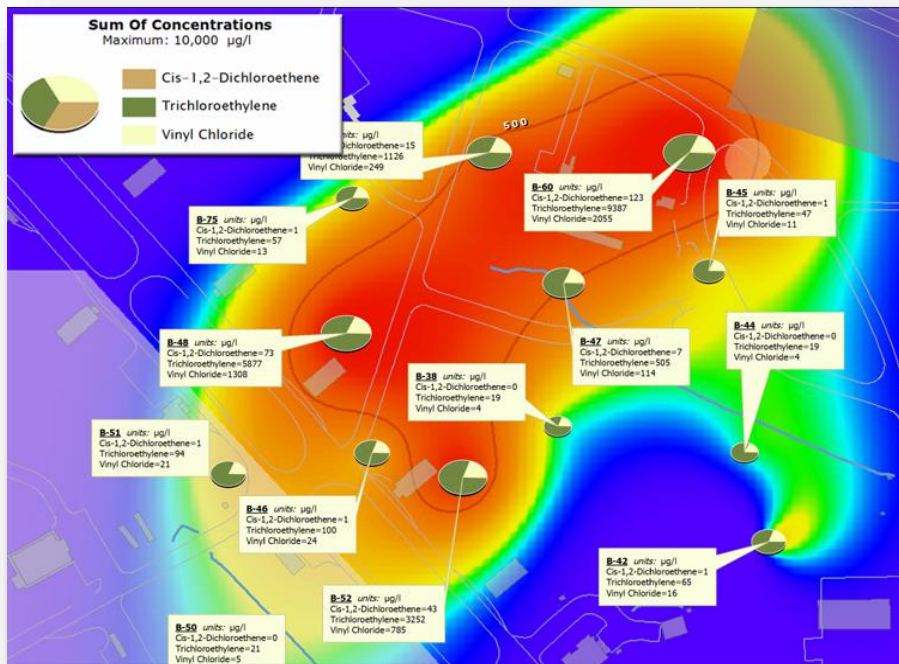
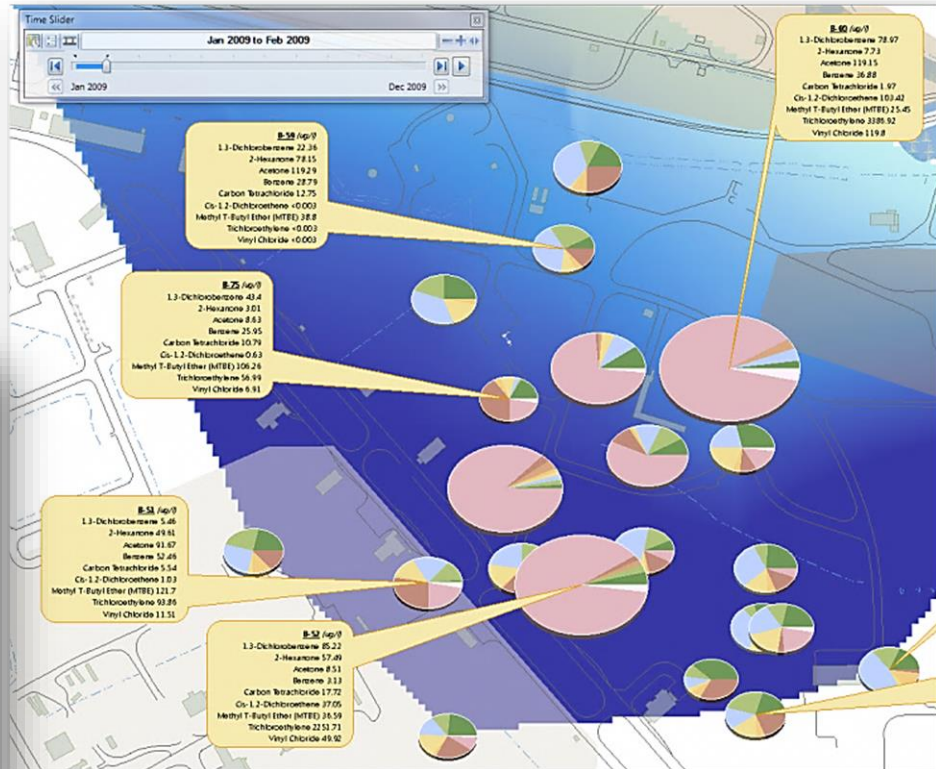


EQuIS for ArcGIS adds powerful environmental modules and utilities enhancing the capabilities of ESRI's ArcMap and ArcScene desktop GIS applications. ArcView, ArcEditor, or ArcInfo can be used to create, query, map, analyze, and report from EQuIS project databases, while seamlessly integrating the GIS with industry-leading, third-party software.

ArcGIS 10 Support

Supports ESRI's ArcGIS 10 in addition to 9.3.x.
Takes advantage of ArcGIS 10 features including time-aware layers, default geodatabases, query layers, basemap layers, and ArcGIS metadata.

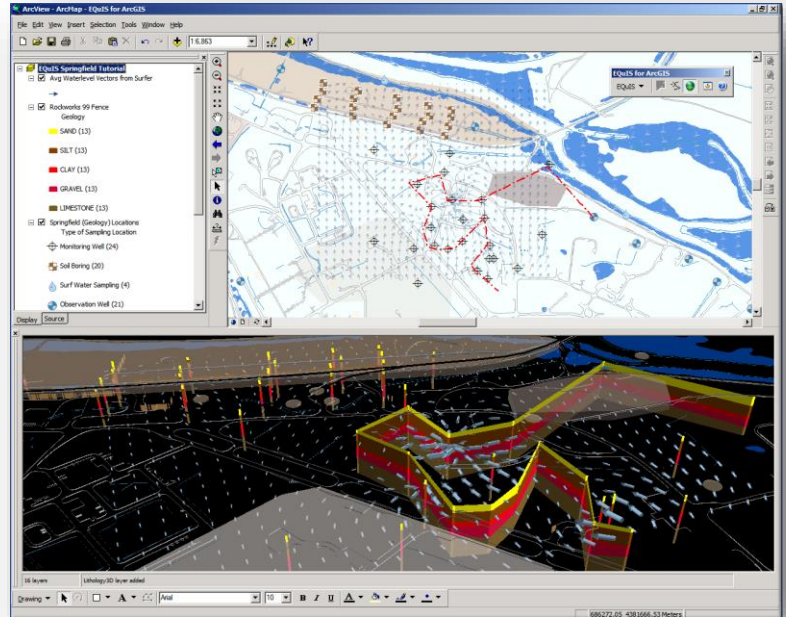
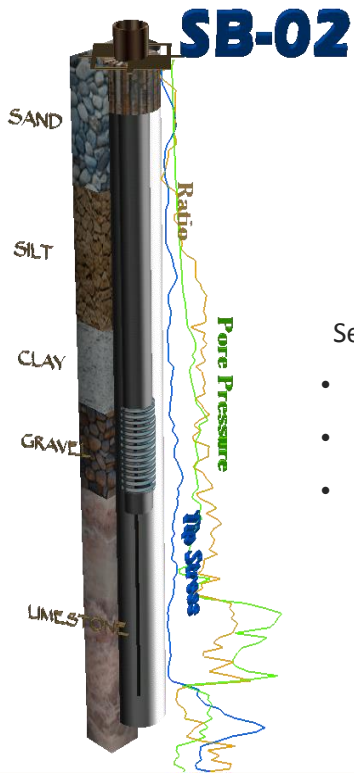


EZView LayerBuilder

Queries data from EQuIS Professional and Enterprise with EZView: a hierarchical tree view helps refine search criteria querying analytical results or groundwater elevations from EQuIS databases. The resulting queries are opened as layers stored in geodatabases, or as dynamic layers with live links to EQuIS databases.

Interfaces to Leading Environmental Applications

EQUS for ArcGIS interfaces with HoleBASE, EnviroInsite, RockWorks, LogPlot, GMS, gINT, EVS/MVS, Surfer, and other tools for creating boring logs, geologic fences, tabular labels (spider diagrams), and contours seamlessly from ArcMap and ArcScene.



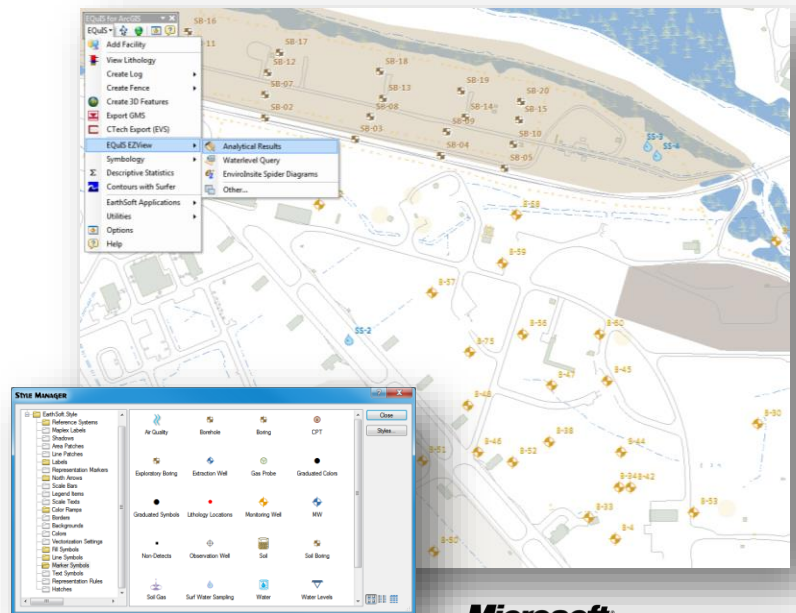
Extends ArcGIS

Several non-environmental features enhancing ArcGIS are also included:

- 3D Preview Window for ArcMap
- Layer properties “Metadata” tab for viewing and editing from ArcMap/ArcScene.
- Create 3D Features module that creates multipatch geometries (left).

Connect to EQUS Databases

- EQUS table relationships are recreated in ArcGIS making it easy to incorporate facility information in GIS analysis or geoprocessing.
- Automatically place sample locations on maps.
- All layers use a customizable, facility-specific symbol Style Gallery, helping standardize maps for production.



Copyright © 2014 by EarthSoft, Inc. All Rights Reserved.

EarthSoft's EQUS is most widely used environmental data management system in the world. EQUS is used by many government agencies, industrial property owners, over 400 consultants and over 500 analytical labs around the world.



Partner

www.EarthSoft.com
 twitter.com/EarthSoft
 www.youtube.com/EarthSoft
 PO Box 1376, Concord, MA 01742
 978.369.2201