

EQUS™ The world's most widely used environmental data management system

Own the Workflow, Make Better Decisions

What is EQUS?

EarthSoft's EQUS is an advanced data management and decision support software system. EQUS is scalable, configurable, and supports the entire environmental data management workflow. Utilized by government, industrial and consultant clients throughout the world, EQUS automates workflow solutions for the fields of biology, geology, geotechnical, water, limnology, air quality, and associated compliance monitoring.

Improve Lab and Field Data Quality

- Integrated data checker (EDP) to ensure quality environmental data workflows.
- Smart field forms enforce database and business rules automatically.
- The Data Qualification Module (DQM) verifies data quality rules for analytical data usability.



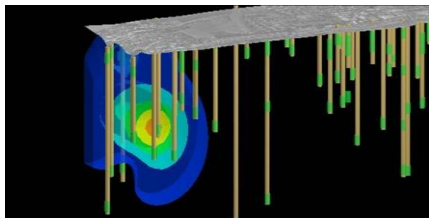
Share data in the field, office and across the organization

Integrated applications support front-to-back environmental project workflows and provide solutions for a variety of project requirements:

- task management
- field data collection
- analytical data processing
- verification and validation
- reporting, and visualization (e.g., Esri's ArcGIS for graphic visualization).

EQUS Support Resources

EarthSoft has expert Help Desk staff, extensive video library, a library of training videos, online documentation, and community forum.



Decision Support & Data Analysis

Integration with visualization software such as: EnviroInsight, Esri, gINT, EVS, Rockware, and several other common tools.



Why EQUS?

- EQUS significantly improves environmental data quality while lowering the costs of data management including report production and GIS integration.
- Plan, manage, report and, visualize your environmental data needs.
- 20 years of continuous innovation.
- Used in 42 countries - largest distributed environmental data management software solution in our market.
- Considered by many to be the de facto industry standard.
- On-Premises hosting or EQUS Online (secure cloud hosting with Microsoft Azure).

"It is difficult to quantify the saving to CEMEX but it is estimated that between 25% and 30% of project time can be saved in compiling and manipulating data [in EQUS]."

Kevin Wilson,

Environmental Data Manager, CEMEX

EQuIS Improves Data Quality & Lowers Costs

Benefits

Accessibility. Centralized location, collaborative work space, global access (web-based), historical retention.

Improved project transitions – internal and external.

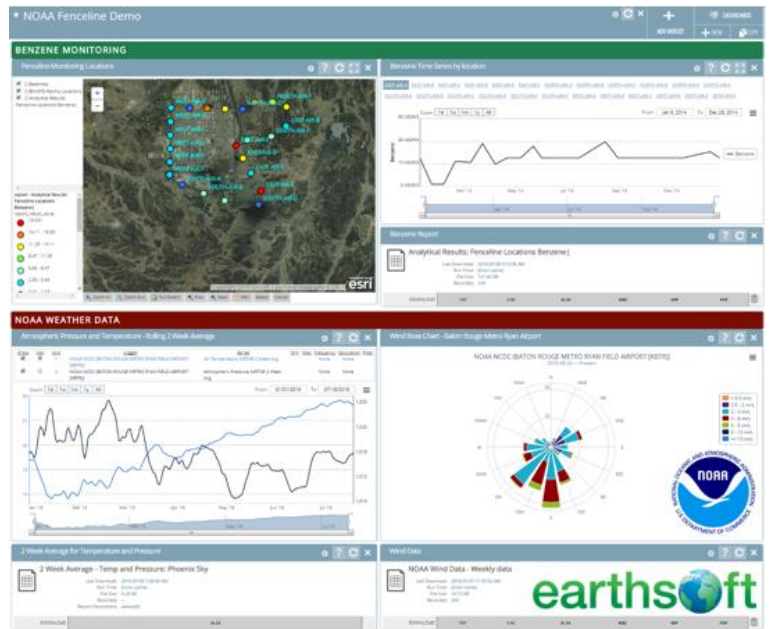
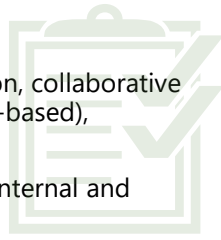
Cost Reduction. Reduce man hours to input, create, and distribute information.

Standardization. Consistency in format and presentation; data integrity.

Project management tools. Ability to easily monitor project progress and data from a central location.

Collaboration. Increase ability to share documents through web portal.

Communications. Easily communicate with project teams through online tools.



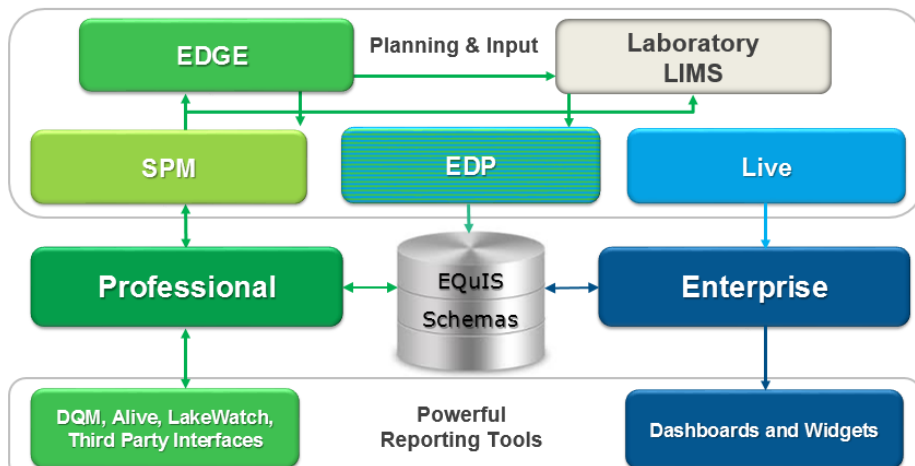
EQuIS Live - datalogger data

Live handles real-time, time series data from data loggers, sensors, buoys, and other IOT sources within and external to EQuIS.

- View time series data via Enterprise dashboards, alerts and reports.
- Integrate time series data with ArcGIS JavaScript API mapping functionality.
- View and compare multiple data sources on the same chart.



EQuIS™ Product Schematic



Copyright 2016 EarthSoft, Inc.

v. 9/2/2016

EQuIS: the complete data management solution

Integrated applications working together to provide a complete and comprehensive data management solution. Plan, input, and report to make powerful and informed decisions.

Business Partner Program

EarthSoft's Business Partner Program highlights strategic relationships with service organizations who have expertise with EQuIS applications and process.

